



Ethan Willett  
0844752021  
ethan.w@newpointproperty.co.za

Contact Head Office

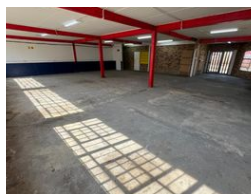
010 0354431

Office 40A  
Eden Meadows Complex  
1 Van Riebeeck Avenue  
Greenstone  
1609

225m<sup>2</sup> Warehouse To Let in Strijdompark



Web Ref CL13250



R14,000 pm

Gross Monthly Rental R14,000 Excl. VAT  
Monthly Rates R1 Excl. VAT

Monthly Levy R1 Excl. VAT



0



5

## 225m<sup>2</sup> Warehouse with Private Yard in Strijdompark – Secure & Affordable Industrial Space

Available immediately at R14,000/month (ex. VAT), this 225m<sup>2</sup> industrial unit in Strijdompark, Randburg, is ideal for businesses needing a practical and secure space. Located in a 24-hour access-controlled park, the unit features a private yard area, an on-grade roller shutter door, and a generous warehouse floor—perfect for storage, light manufacturing, or distribution. A dependable 3-phase power supply supports various industrial operations.

The property includes two well-sized offices, a kitchenette, and two bathrooms—offering comfort and convenience for daily operations. Well-maintained and easily accessible from main roads and transport routes, this unit provides excellent value in a

## Features

**Zoning** Industrial

### Interior

Floor Loading Cap. 2 Tn/m<sup>2</sup>  
Power 3 Phase Yes  
Power Amps 60

### Exterior

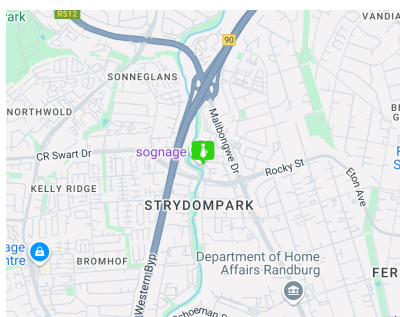
Open Parking Bays 5

### Sizes

Floor Size 225m<sup>2</sup>

### Extras

24 Hour Access 24 Hour Response



<https://www.newpointproperty.co.za>