



Ethan Willett  
0844752021  
ethan.w@newpointproperty.co.za

Contact Head Office

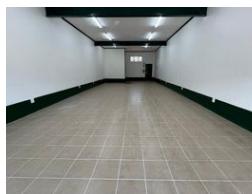
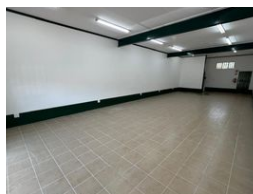
010 0354431

Office 40A  
Eden Meadows Complex  
1 Van Riebeeck Avenue  
Greenstone  
1609

100m<sup>2</sup> Warehouse To Let in Strijdompark



Web Ref EWTLS100AKI



R10,900 pm

Gross Monthly Rental R10,900 Excl. VAT  
Monthly Rates R1 Excl. VAT

Monthly Levy R1 Excl. VAT



## Industrial Property to Rent in Strijdompark, Randburg

This 100sqm retail mini unit, available for immediate rental at R10 900 per month with no VAT charged, presents a prime opportunity for businesses seeking a well-maintained and accessible space. Ideally located just off the bustling Malibongwe Drive in Strijdompark, Randburg, the unit offers excellent visibility and ease of access for clients and deliveries alike. The neat, open-plan layout is versatile and designed to accommodate a range of commercial or light industrial uses, making it ideal for a variety of business types.

Inside, the unit boasts great natural lighting, enhancing the workspace environment and reducing the need for excessive artificial light during the day. It comes fitted with a private bathroom and a kitchenette, adding convenience for staff or customers. Whether

## Features

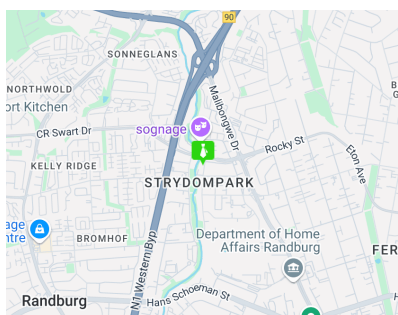
**Zoning** Industrial

**Interior**  
Floor Loading Cap. 2 Tn/m<sup>2</sup>

**Exterior**  
Open Parking Bays 3

**Sizes**  
Floor Size 100m<sup>2</sup>

**Extras**  
24 Hour Access 24 Hour Response



<https://www.newpointproperty.co.za>