



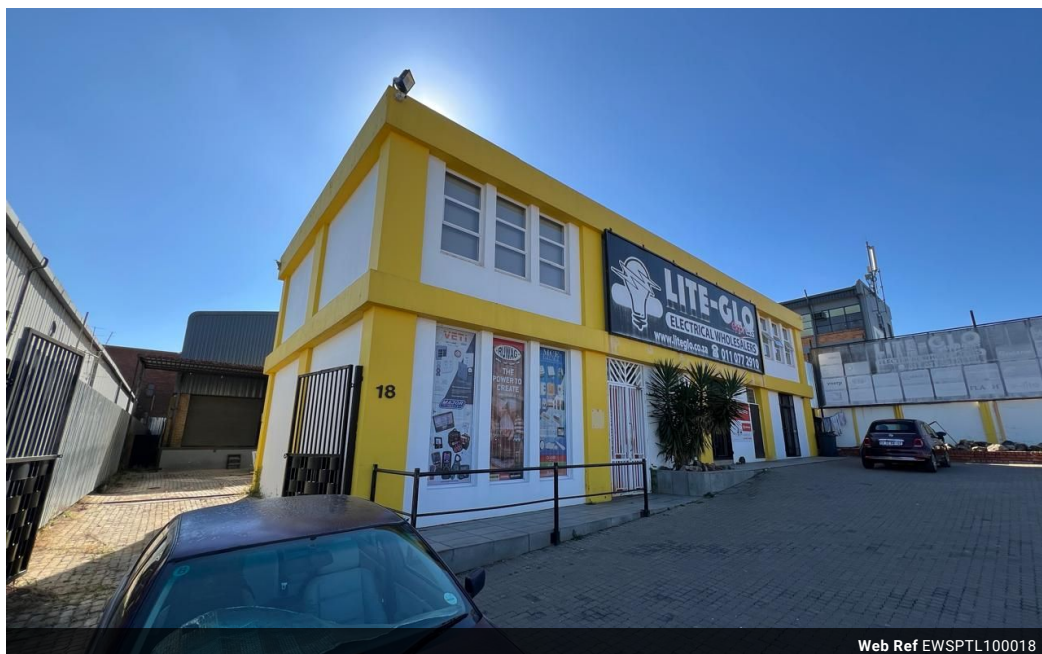
Ethan Willett  
0844752021  
ethan.w@newpointproperty.co.za

Contact Head Office

010 0354431

Office 40A  
Eden Meadows Complex  
1 Van Riebeeck Avenue  
Greenstone  
1609

1,000m<sup>2</sup> Warehouse To Let in Strijdompark



Web Ref EWSPTL100018



R60,000 pm

Gross Monthly Rental R60,000 Excl. VAT  
Monthly Rates R1 Excl. VAT

Monthly Levy R1 Excl. VAT



0



10

## Industrial Property to Rent in Strijdompark, Randburg

This 1,000sqm free-standing industrial property in Strijdompark, Randburg is available immediately to rent at R60,000 plus VAT, or for purchase at R6,000,000 plus VAT. Ideally located just off the main arterial Malibongwe Drive, the property offers excellent access for logistics and transport. It features three roller shutter doors, a spacious yard, and easy truck access, making it ideal for warehousing, distribution, or light manufacturing. The warehouse itself boasts great roof height and a large, open floor area suitable for various industrial operations.

The property also includes three bathrooms, generous office space to accommodate administrative needs, and a well-positioned retail section at the front, perfect for showroom or customer-facing activities. Being a stand-alone site, it provides both operational

## Features

**Zoning** Industrial

### Interior

Floor Loading Cap. 3 Tn/m<sup>2</sup>  
Power 3 Phase Yes  
Power Amps 100

### Exterior

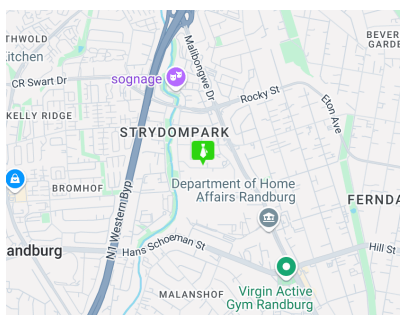
Open Parking Bays 10

### Sizes

Floor Size 1,000m<sup>2</sup>

### Extras

24 Hour Access 24 Hour Response



<https://www.newpointproperty.co.za>