



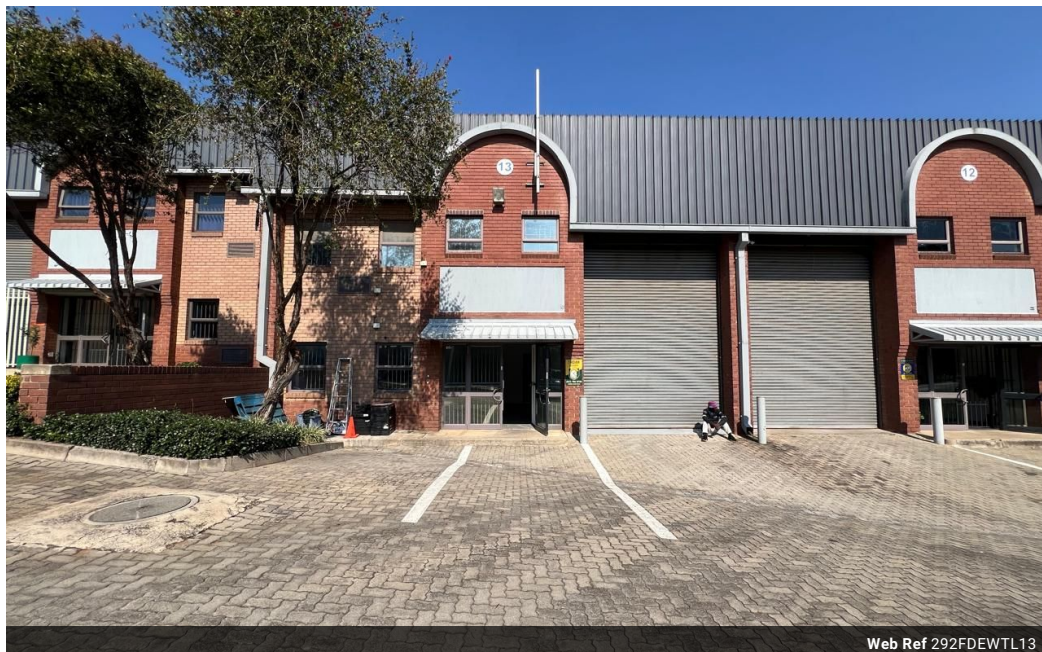
Ethan Willett
0844752021
ethan.w@newpointproperty.co.za

Contact Head Office

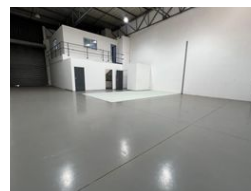
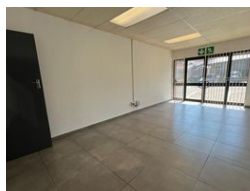
010 0354431

Office 40A
Eden Meadows Complex
1 Van Riebeeck Avenue
Greenstone
1609

292m² Warehouse To Let in Strijdompark



Web Ref 292FDEWTL13



R20,440 pm

Gross Monthly Rental R20,440 Excl. VAT
Monthly Rates R1 Excl. VAT

Monthly Levy R1 Excl. VAT



0



6

Industrial Property For Sale in Strijdompark, Randburg

This 292sqm industrial warehouse unit is now available to rent immediately at R20 440 per month (excluding VAT). Situated in a well-maintained and securely gated business park just off Malibongwe Drive in Strijdompark, Randburg, the property offers excellent accessibility for logistics and staff. The unit boasts impressive warehouse roof height, providing ample vertical space for storage or operations, along with a neat and spacious open floor area ideal for various industrial or distribution needs.

Internally, the unit includes two well-proportioned offices, a welcoming reception area, two bathrooms, and a convenient shower facility—perfect for staff use. The property is also equipped with a robust 3-phase power supply, supporting a range of industrial

Features

Zoning Industrial

Interior

Floor Loading Cap. 3 Tn/m²
Power 3 Phase Yes
Power Amps 60

Exterior

Security Yes
Open Parking Bays 6

Sizes

Floor Size 292m²

Extras

24 Hour Access 24 Hour Response

