



Ethan Willett
0844752021
ethan.w@newpointproperty.co.za

Contact Head Office

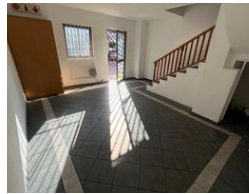
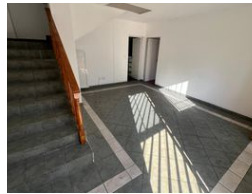
010 0354431

Office 40A
Eden Meadows Complex
1 Van Riebeeck Avenue
Greenstone
1609

773m² Warehouse To Let in Strijdompark



Web Ref 773EWSPTLU7



R57,975 pm

Gross Monthly Rental R57,975 Excl. VAT
Monthly Rates R1 Excl. VAT

Monthly Levy R1 Excl. VAT

4 12

Industrial Property to Rent in Strijdompark, Randburg

This spacious 773sqm industrial warehouse is available for immediate rental at R57,975 per month (excluding VAT). Located in the well-established Strijdompark area of Randburg, the property is situated in a neat and securely maintained business park, offering peace of mind with 24/7 access control and perimeter fencing. Its strategic location provides excellent accessibility, with quick connections to the N1 highway and Malibongwe Drive, making it ideal for logistics, distribution, or light manufacturing operations.

The warehouse boasts a generous open floor layout with a high roof, perfect for efficient racking and stacking. It includes ample office space distributed across two floors, allowing for administrative and operational flexibility. Additional amenities include five

Features

Zoning Industrial

Interior

Floor Loading Cap. 3 Tn/m²
Air Conditioning Yes
Power 3 Phase Yes
Power Amps 100

Exterior

Security Yes
Covered Parking Bays 4
Open Parking Bays 12

Sizes

Floor Size 773m²

Extras

24 Hour Access 24 Hour Response Air Conditioning Unit

