



Ethan Willett
0844752021
ethan.w@newpointproperty.co.za

Contact Head Office

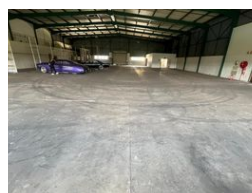
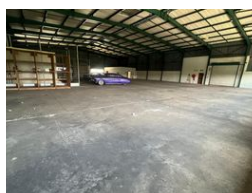
010 0354431

Office 40A
Eden Meadows Complex
1 Van Riebeeck Avenue
Greenstone
1609

1,948m² Warehouse To Let in Strijdompark



Web Ref 1948EWSPTL



R146,100 pm

Gross Monthly Rental R146,100 Excl. VAT
Monthly Rates R1 Excl. VAT

Monthly Levy R1 Excl. VAT

10 20

Prime Industrial Property to Rent in Strijdompark, Randburg

This spacious industrial warehouse, measuring 1,948sqm, is available for immediate rental at R146,100 per month (excluding VAT). Located in the well-established industrial hub of Strijdompark, Randburg, the property boasts exceptional visibility from the N1 highway, offering prime exposure for any business. The facility is well-equipped for logistics and distribution operations, featuring three on-grade roller shutter doors, one dock leveler for efficient loading and offloading, and excellent access for link trucks. The generous internal height and open floor space make it ideal for warehousing, storage, or light manufacturing needs.

In addition to its functional warehouse area, the property offers ample office accommodation spread across three floors, making it

Features

Zoning Industrial

Interior

Floor Loading Cap. 3 Tn/m²
Air Conditioning Yes
Power 3 Phase Yes
Power Amps 200

Exterior

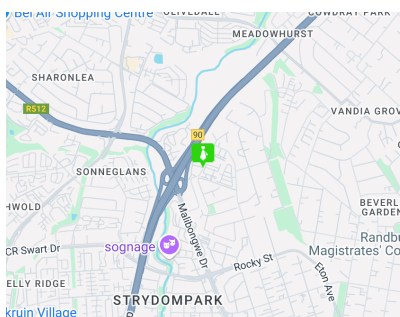
Security Yes
Covered Parking Bays 10
Open Parking Bays 20

Sizes

Floor Size 1,948m²
Land Size 3,959m²

Extras

24 Hour Access 24 Hour Response Air Conditioning Unit Alarm System



<https://www.newpointproperty.co.za>