



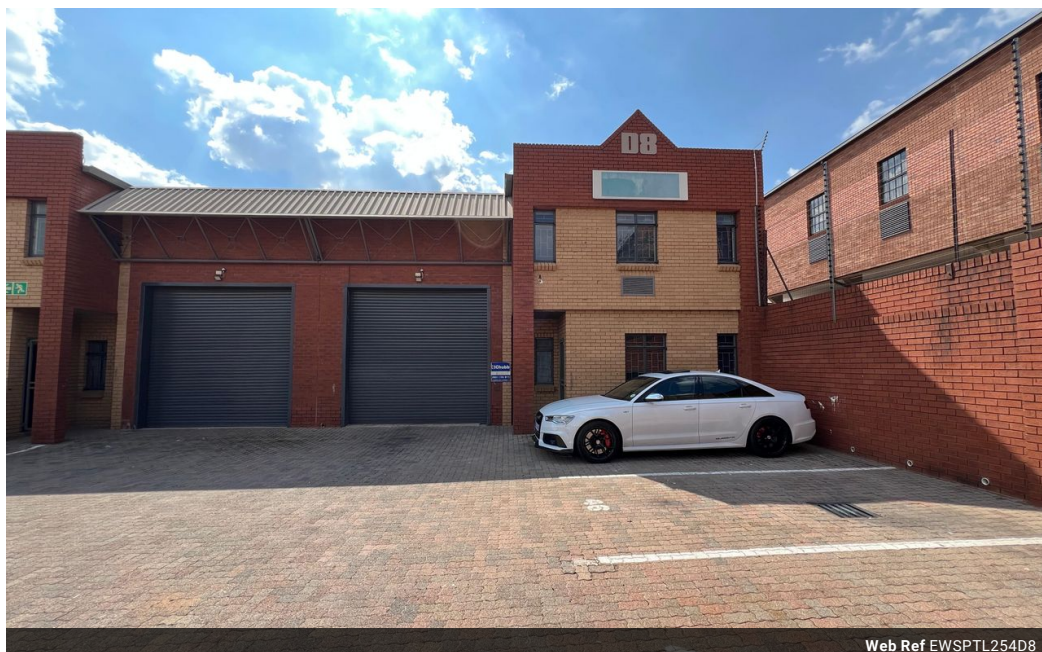
Ethan Willett  
0844752021  
ethan.w@newpointproperty.co.za

Contact Head Office

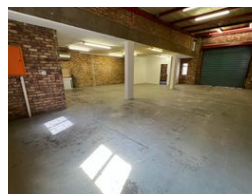
010 0354431

Office 40A  
Eden Meadows Complex  
1 Van Riebeeck Avenue  
Greenstone  
1609

254m<sup>2</sup> Warehouse To Let in Strijdompark



Web Ref EWSPTL254D8



R19,799 pm

**Gross Monthly Rental** R19,799 Excl. VAT  
**Monthly Rates** R1 Excl. VAT

**Monthly Levy** R1 Excl. VAT



## Industrial Property to Rent in Strijdompark, Randburg

This well-maintained industrial warehouse, measuring 254sqm, is immediately available to rent in the secure and popular industrial hub of Strijdompark, Randburg. Priced at R19 799 per month (excluding VAT and utilities), this unit is situated in a clean, well-run park that offers 24-hour security, ensuring peace of mind for your business operations. The warehouse features an on-grade roller shutter door, excellent internal height for racking or storage, and a durable floor space ideal for light industrial or logistics operations. It also boasts a robust 3-phase power supply with 80 amps, catering to businesses with higher electrical demands.

The unit is designed for functionality and comfort, with two bathrooms, a convenient shower, and a kitchenette on the ground floor

## Features

**Zoning** Industrial

### Interior

Floor Loading Cap.	3 Tn/m <sup>2</sup>
Air Conditioning	Yes
Power 3 Phase	Yes
Power Amps	80

### Exterior

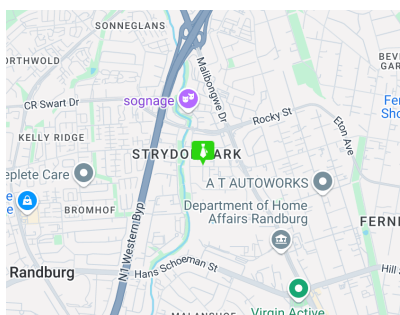
Security	Yes
Open Parking Bays	4

### Sizes

Floor Size	254m <sup>2</sup>
------------	-------------------

### Extras

24 Hour Access 24 Hour Response



<https://www.newpointproperty.co.za>