



Ethan Willett
0844752021
ethan.w@newpointproperty.co.za

Contact Head Office

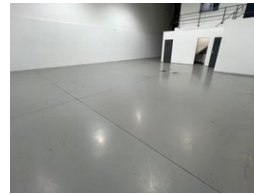
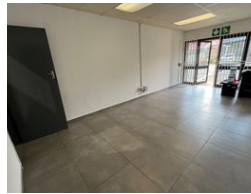
010 0354431

Office 40A
Eden Meadows Complex
1 Van Riebeeck Avenue
Greenstone
1609

292m² Warehouse To Let in Strijdompark



Web Ref SPEWTL29213



R20,440 pm

Gross Monthly Rental R20,440 Excl. VAT
Monthly Rates R1 Excl. VAT

Monthly Levy R1 Excl. VAT



0



6

Industrial Property to Rent in Strijdompark, Randburg

This 292sqm industrial warehouse unit is immediately available to rent at R20 440 per month, excluding VAT. Located in a secure and well-maintained business park in Strijdompark, Randburg, the unit benefits from 24-hour security, ensuring peace of mind for your business operations. The space features an on-grade roller shutter door, excellent internal height for racking or storage, and solid floor space ideal for warehousing, light manufacturing, or distribution activities. Additionally, the unit is equipped with 3-phase power, catering to businesses with more intensive electrical needs.

Inside, the warehouse includes a professional reception area, two well-sized offices, and two bathrooms—one of which includes a

Features

Zoning Industrial

Interior

Floor Loading Cap. 2 Tn/m²
Power 3 Phase Yes
Power Amps 100

Exterior

Security Yes
Open Parking Bays 6

Sizes

Floor Size 292m²

Extras

24 Hour Access 24 Hour Response