



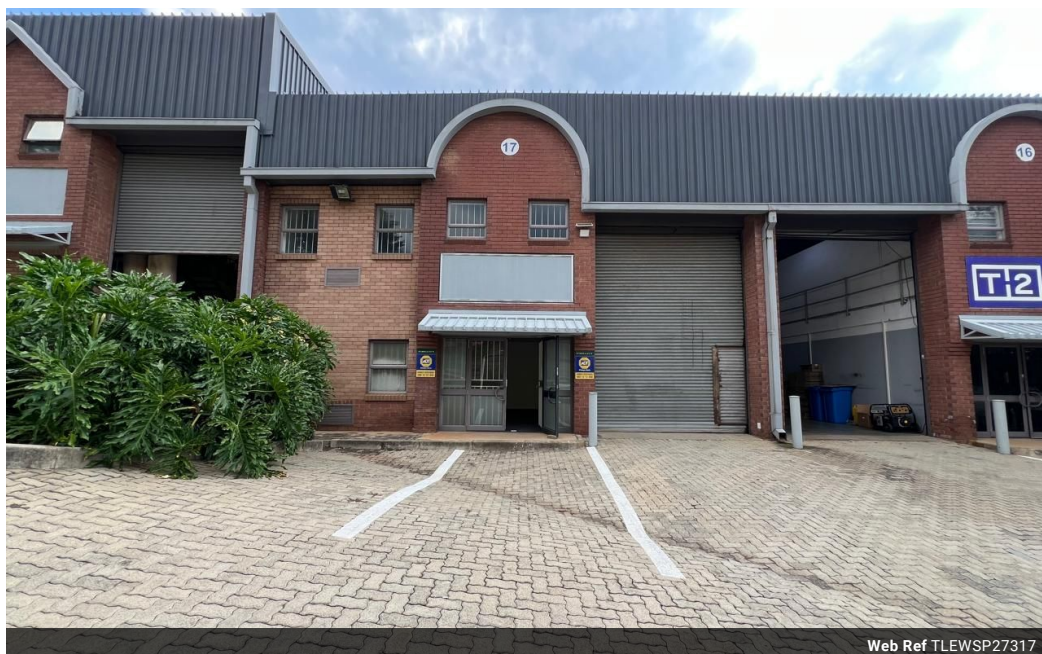
Ethan Willett
0844752021
ethan.w@newpointproperty.co.za

Contact Head Office

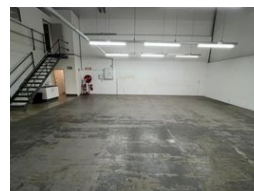
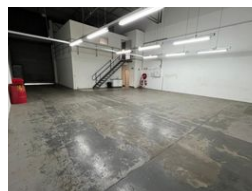
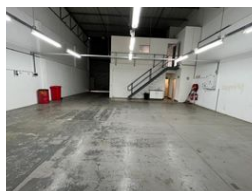
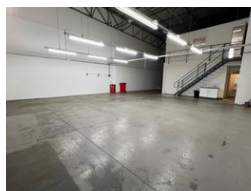
010 0354431

Office 40A
Eden Meadows Complex
1 Van Riebeeck Avenue
Greenstone
1609

273m² Warehouse To Let in Strijdompark



Web Ref TLEWSP27317



R19,110 pm

Gross Monthly Rental R19,110 Excl. VAT
Monthly Rates R1 Excl. VAT

Monthly Levy R1 Excl. VAT



Industrial Property to Rent in Strijdompark, Randburg

This industrial warehouse, located in Strijdompark, Randburg, offers 273sqm of well-maintained space available for immediate rent at R19,110 plus VAT and utilities. The property is situated within a secure and tidy business park that provides 24-hour on-site security, ensuring a safe and controlled environment for your operations. The warehouse features a 4-meter-high on-grade roller shutter, providing easy access for vehicles and deliveries. With excellent warehouse roof height and ample floor space, it is ideal for various industrial or storage needs.

Inside the unit, you'll find a neat reception area that welcomes visitors, alongside office space upstairs to accommodate your administrative team. The warehouse is equipped with two bathrooms, one shower, and a kitchenette for convenience. Additionally,

Features

Zoning Industrial

Interior

Floor Loading Cap. 3 Tn/m²
Power 3 Phase Yes
Power Amps 80

Exterior

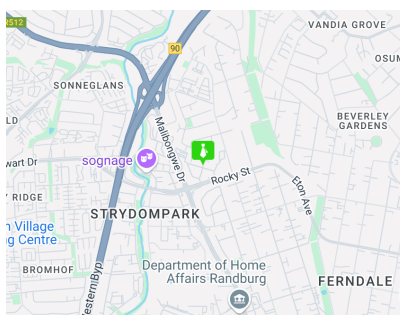
Security Yes
Open Parking Bays 6

Sizes

Floor Size 273m²

Extras

24 Hour Access 24 Hour Response



<https://www.newpointproperty.co.za>