



Ethan Willett
0844752021
ethan.w@newpointproperty.co.za

Contact Head Office

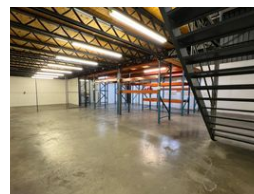
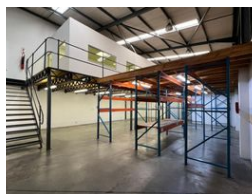
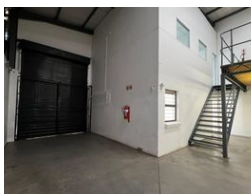
010 0354431

Office 40A
Eden Meadows Complex
1 Van Riebeeck Avenue
Greenstone
1609

310m² Warehouse To Let in Olivedale



Web Ref 310EWODTL1



R25,500 pm

Gross Monthly Rental R25,500 Excl. VAT
Monthly Rates R1 Excl. VAT

Monthly Levy R1 Excl. VAT



0



4

Industrial Property to Rent in Olivedale, Randburg

This 310sqm industrial warehouse unit, available for immediate rental at R25,500 per month (excluding VAT), is a well-maintained sectional titled mini unit located within a secure and professionally managed business estate in Olivedale, Randburg. The estate offers 24-hour security, ensuring a safe and reliable working environment for your operations. The unit features a convenient on-grade roller shutter door, providing easy access for loading and offloading, as well as a spacious warehouse floor ideal for manufacturing, distribution, or storage.

Inside, the warehouse includes a neat mezzanine level that adds valuable operational or storage space. The layout also boasts a tidy reception area leading to ample upstairs office space, making it suitable for businesses requiring both admin and industrial

Features

Zoning Industrial

Interior

Floor Loading Cap. 2 Tn/m²
Air Conditioning Yes
Power 3 Phase Yes
Power Amps 60

Exterior

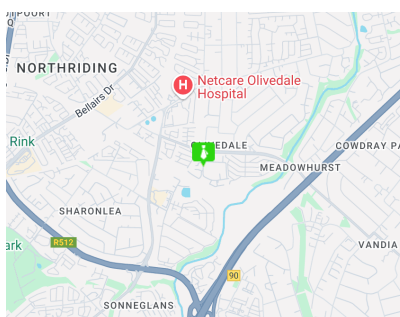
Security Yes
Open Parking Bays 4

Sizes

Floor Size 310m²

Extras

24 Hour Access 24 Hour Response Fibre



<https://www.newpointproperty.co.za>