



Ethan Willett  
0844752021  
ethan.w@newpointproperty.co.za

Contact Head Office

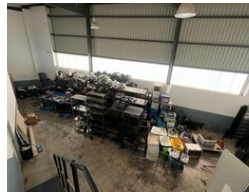
010 0354431

Office 40A  
Eden Meadows Complex  
1 Van Riebeeck Avenue  
Greenstone  
1609

230m<sup>2</sup> Warehouse To Let in Olivedale



Web Ref EWODTL2301



R17,250 pm

Gross Monthly Rental R17,250 Excl. VAT  
Monthly Rates R1 Excl. VAT

Monthly Levy R1 Excl. VAT

0 7

## Industrial Property to Rent in Olivedale, Randburg

This 230sqm industrial warehouse unit is immediately available to rent at R17 250 plus VAT, located in a clean and securely managed business estate in Olivedale, Randburg. Positioned just off the main Jacaranda Avenue, the unit offers excellent accessibility and visibility for logistics and operations. The warehouse features an on-grade roller shutter door, generous roof height, and ample open floor space, making it ideal for storage, distribution, or light manufacturing.

The unit includes a neat ground floor reception area with its own bathroom, creating a professional first impression for clients or visitors. An open-plan office space is situated on the upper level, complete with a second bathroom and a well-equipped kitchen,

## Features

**Zoning** Industrial

### Interior

Floor Loading Cap. 2 Tn/m<sup>2</sup>  
Air Conditioning Yes  
Power 3 Phase Yes  
Power Amps 60

### Exterior

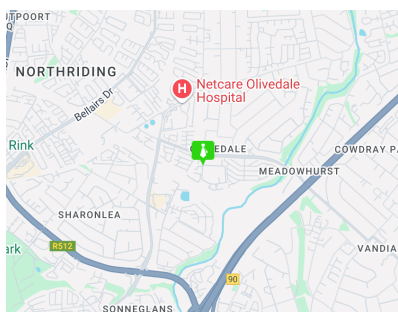
Security Yes  
Open Parking Bays 7

### Sizes

Floor Size 230m<sup>2</sup>

### Extras

24 Hour Access 24 Hour Response



<https://www.newpointproperty.co.za>