



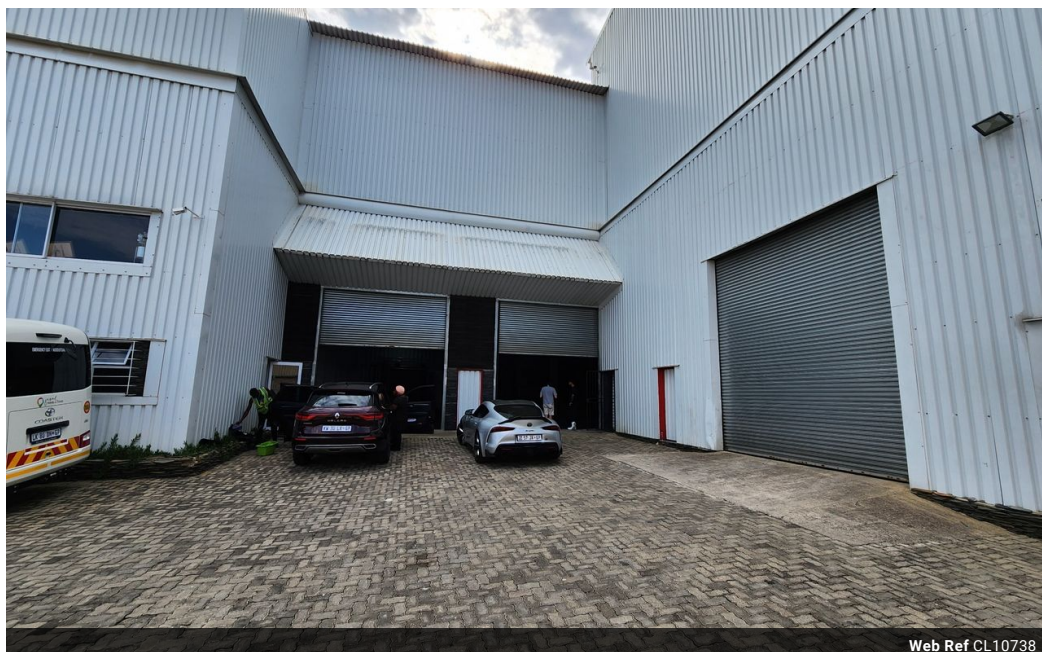
**Ethan Willett**  
 0844752021  
[ethan.w@newpointproperty.co.za](mailto:ethan.w@newpointproperty.co.za)

Contact Head Office

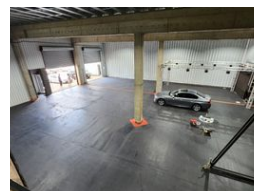
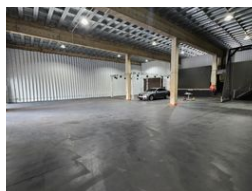
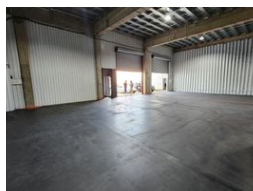
010 0354431

Office 40A  
 Eden Meadows Complex  
 1 Van Riebeeck Avenue  
 Greenstone  
 1609

750m<sup>2</sup> Warehouse To Let in Olivedale



Web Ref CL10738



R51,000 pm

Gross Monthly Rental R51,000 Excl. VAT



## 750sqm Industrial Property in Olivedale, Randburg

This industrial unit, located in the heart of Olivedale, Randburg, presents a prime opportunity for businesses seeking secure and functional space. Encompassing 750 square meters within a well-maintained business park, it offers robust security features such as palisade and electric fencing, ensuring peace of mind during and beyond working hours.

Meticulously maintained, the unit features a welcoming reception area that sets a professional tone. Inside, tenants will find two well-appointed offices for administrative tasks, complemented by two bathrooms and a convenient shower facility. The spacious warehouse area provides ample room for storage or manufacturing activities, and with 125 amps of 3-phase power, it caters to

## Features

### Building Name Zoning

Unit 1 Meadowbrook Office Park  
 Industrial

### Interior

Power 3 Phase Yes  
 Power Amps 125

### Exterior

Security Yes  
 Open Parking Bays 4

### Sizes

Floor Size 750m<sup>2</sup>  
 Land Size 750m<sup>2</sup>



<https://www.newpointproperty.co.za>