



William Christie
Candidate Property
Practitioner
Registered with PPRA
(FFC 121 152 2)
0740552244

william@newpointproperty.co.za

Contact Head Office

010 0354431

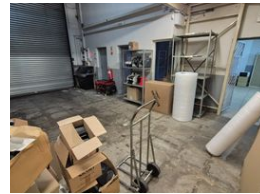
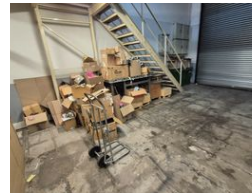
Office 40A
Eden Meadows Complex
1 Van Riebeeck Avenue
Greenstone
1609

410m² Warehouse To Let in North Riding

NEW



Web Ref CL13679



R31,000 pm

Gross Monthly Rental R31,000 Excl. VAT



410m² Mini Warehouse To Let in Northlands Business Park – Secure & Functional

This 410m² mini warehouse in Northlands Business Park is now available to lease, offering a secure and professional space ideal for light industrial work, storage, or distribution. The unit includes a modern office area, staff ablutions, 3-phase power, and an on-grade roller shutter door for easy access and operational efficiency.

Set in a well-maintained, access-controlled park with excellent transport links, this property is perfectly positioned for growing businesses. Whether you're expanding or relocating, this space provides the flexibility and location you need. Contact us today to

Features

Zoning Industrial

Interior

| | |
|---------------|-----|
| Power 3 Phase | Yes |
| Power Amps | 100 |

Exterior

| | |
|----------|-----|
| Security | Yes |
|----------|-----|

Sizes

| | |
|-----------------|-------|
| Floor Size | 410m² |
| Land Size | 410m² |
| Building Height | 8m |

