



**William Christie**  
Candidate Property  
Practitioner  
Registered with PPRA  
(FFC 121 152 2)  
0740552244

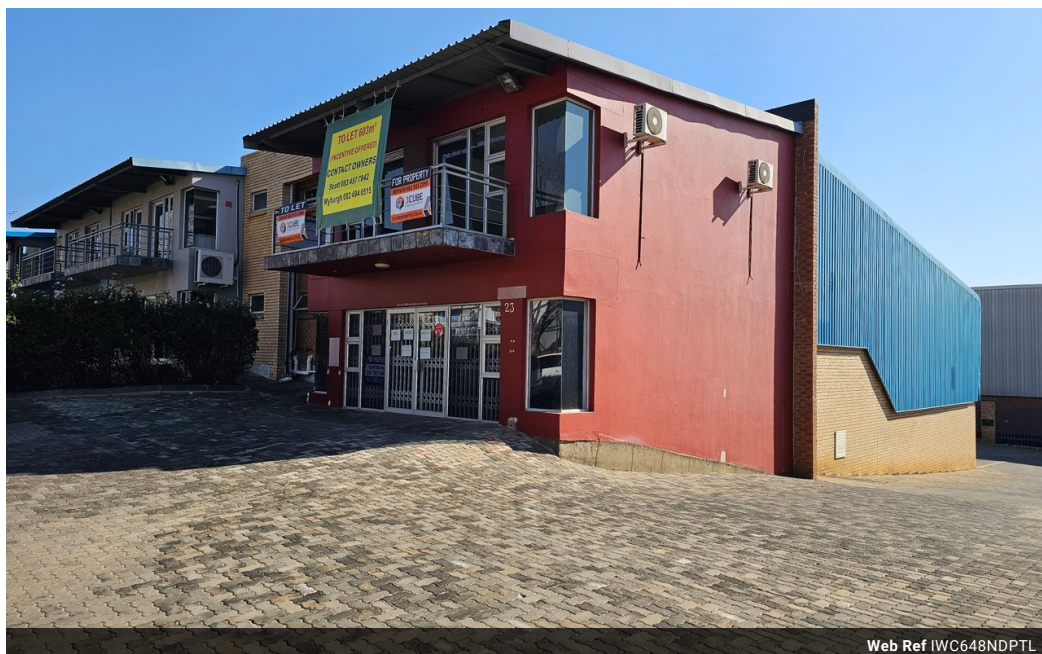
[william@newpointproperty.co.za](mailto:william@newpointproperty.co.za)

Contact Head Office

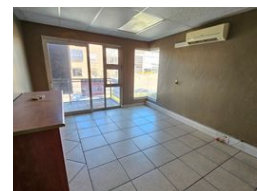
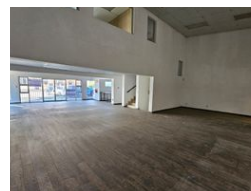
010 0354431

Office 40A  
Eden Meadows Complex  
1 Van Riebeeck Avenue  
Greenstone  
1609

648m<sup>2</sup> Warehouse To Let in North Riding



Web Ref IWC648NDPTL



R54,000 pm

Gross Monthly Rental R54,000 Excl. VAT



## Retail Space to Let in Popular Northlands Deco Park

Neat and versatile retail unit available in the highly sought-after Northlands Deco Park. This space is ideal for a retail business looking to benefit from high visibility and steady foot traffic within a bustling commercial hub.

The unit is split into three functional areas:

A spacious warehouse fitted with three-phase power, making it suitable for light manufacturing or storage.

A well-positioned showroom area designed to accommodate walk-in clients.

A private, well-sized office located on the upper level, offering a professional workspace.

A large roller shutter door at the rear of the property allows for easy deliveries and dispatch. The park itself is known for its excellent security, 24/7 access control, and clean, professional environment, making it a prime location for businesses looking to

## Features

**Zoning** Industrial

### Interior

Floor Loading Cap. 5 Tn/m<sup>2</sup>  
Power 3 Phase Yes  
Power Amps 63

### Exterior

Security Yes

### Sizes

Floor Size 648m<sup>2</sup>  
Land Size 648m<sup>2</sup>  
Building Height 8m



<https://www.newpointproperty.co.za>