



William Christie
Candidate Property
Practitioner
Registered with PPRA
(FFC 121 152 2)
0740552244

william@newpointproperty.co.za

Contact Head Office

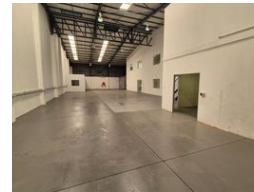
010 0354431

Office 40A
Eden Meadows Complex
1 Van Riebeeck Avenue
Greenstone
1609

842m² Warehouse To Let in North Riding



Web Ref CL13491



R57,256 pm

Gross Monthly Rental R57,256 Excl. VAT

2 8

Versatile 842m² Freestanding Facility in Prime Northlands Deco Park

Position your business for success with this exceptional freestanding unit in the heart of Northlands Deco Park, North Riding. Offering a total of 842m² under roof, this dynamic space combines high-volume warehousing, a polished showroom, and modern office space—making it ideal for businesses needing a client-facing component alongside efficient operations.

Designed for performance and presentation, the warehouse includes generous height, an on-grade roller shutter door, and a dock leveler to accommodate seamless logistics. The interior boasts sleek office finishes and a welcoming showroom, supported by robust three-phase power and a flexible layout to suit a range of industrial and commercial needs. With excellent access to main

Features

Zoning Industrial

Interior

Power 3 Phase Yes
Power Amps 100

Exterior

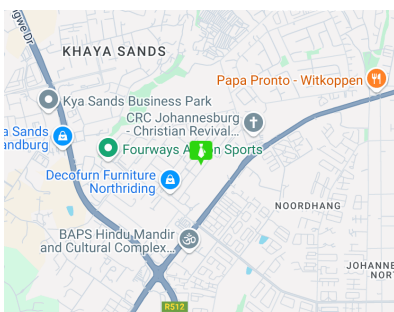
Security Yes
Covered Parking Bays 2
Open Parking Bays 8

Sizes

Floor Size 842m²
Land Size 1,211m²
Building Height 8m

Extras

24 Hour Access 24 Hour Response



<https://www.newpointproperty.co.za>