

**William Christie**  
Candidate Property  
Practitioner  
Registered with PPRA  
(FFC 121 152 2)  
0740552244

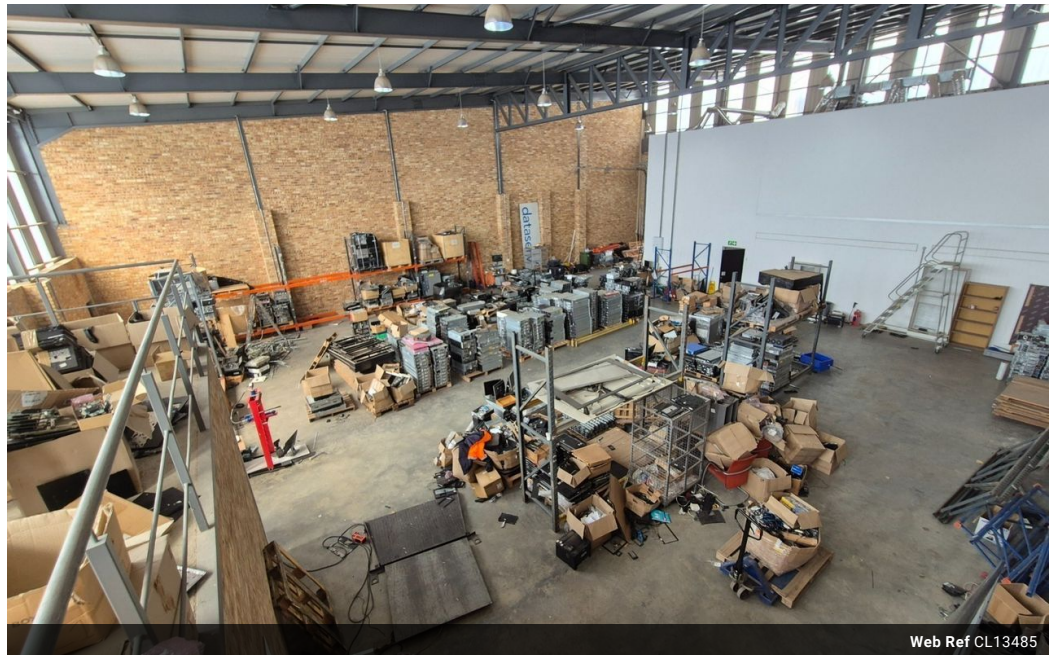
[william@newpointproperty.co.za](mailto:william@newpointproperty.co.za)

Contact Head Office

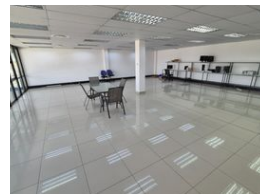
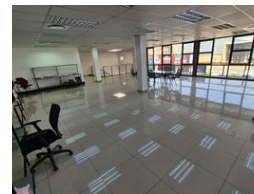
010 0354431

Office 40A  
Eden Meadows Complex  
1 Van Riebeeck Avenue  
Greenstone  
1609

875m<sup>2</sup> Warehouse To Let in North Riding



Web Ref CL13485



R70,000 pm

Gross Monthly Rental R70,000 Excl. VAT



0



0

## Modern 875m<sup>2</sup> Warehouse with Showroom & Office in North Riding Business Park

Position your business in this premium 875m<sup>2</sup> warehouse, ideally located in the sought-after North Riding Business Park. Featuring a sleek showroom and modern office space, this unit offers the perfect balance between client-facing presentation and operational efficiency.

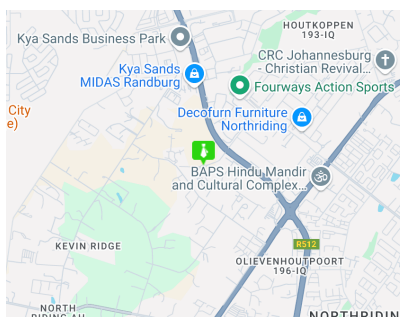
The warehouse boasts excellent height, a spacious open-plan layout, a large roller shutter door for easy loading, and 3-phase power. With 24/7 security and access control in a well-maintained park, this property is ideal for distribution, light manufacturing,

## Features

**Zoning** Industrial

### Sizes

Floor Size	875m <sup>2</sup>
Land Size	45,000m <sup>2</sup>
Building Height	10m



<https://www.newpointproperty.co.za>