



## Martin Montgomery

Candidate Property Practitioner  
Registered with PPRA  
(FFC 121 152 3)

0818542055

[martin@newpointproperty.co.za](mailto:martin@newpointproperty.co.za)

Contact Head Office

010 0354431

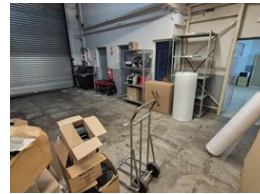
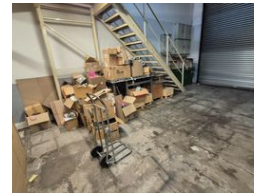
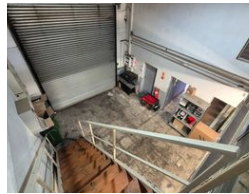
Office 40A  
Eden Meadows Complex  
1 Van Riebeeck Avenue  
Greenstone  
1609

## 410m² Warehouse To Let in North Riding

NEW



Web Ref CL13336



R31,000 pm

Gross Monthly Rental R31,000 Excl. VAT



## 410m² Mini Warehouse in Secure Northlands Business Park

Now available to lease, this 410m² mini warehouse in Northlands Business Park offers a clean, secure, and professional space ideal for light industrial, storage, or distribution use. The unit features a modern office component, staff ablutions, 3-phase power, and an on-grade roller shutter door—streamlining your operations in a well-maintained industrial setting.

Located in a sought-after industrial node with controlled park access and excellent connectivity to major transport routes, this property combines practicality with security. Whether you're scaling up or relocating, this efficient space offers the flexibility and

## Features

**Zoning** Industrial

### Interior

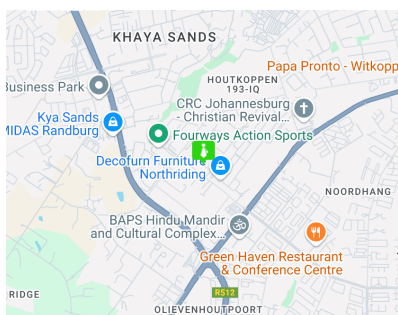
Power 3 Phase Yes  
Power Amps 100

### Exterior

Security Yes

### Sizes

Floor Size 410m²  
Land Size 410m²  
Building Height 8m



<https://www.newpointproperty.co.za>