



**Martin Montgomery**

Candidate Property Practitioner  
Registered with PPRA  
(FFC 121 152 3)

0818542055

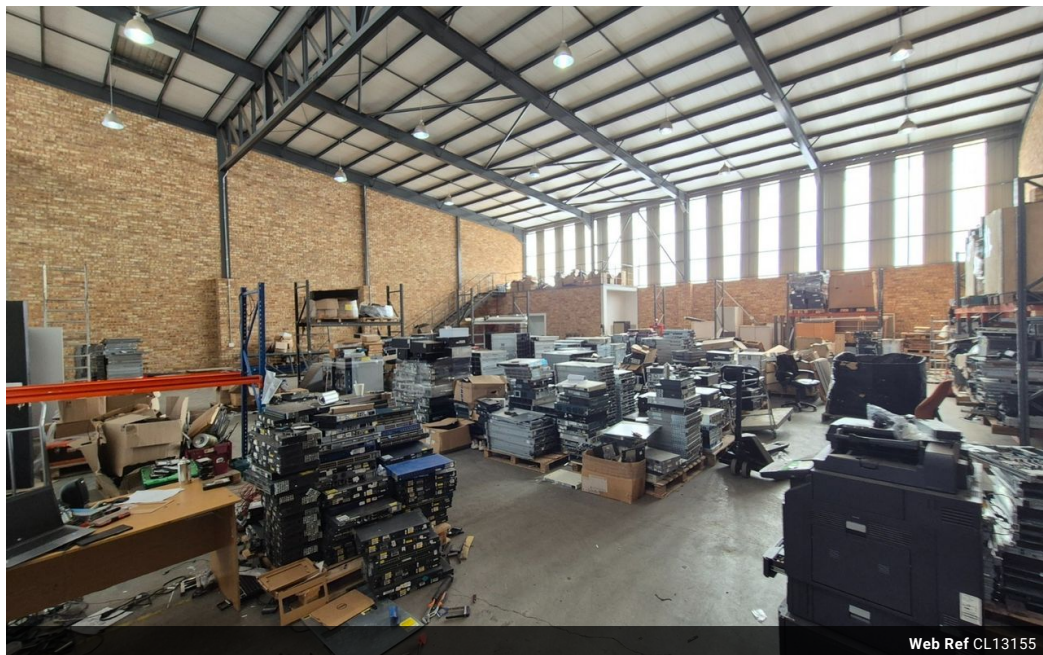
[martin@newpointproperty.co.za](mailto:martin@newpointproperty.co.za)

Contact Head Office

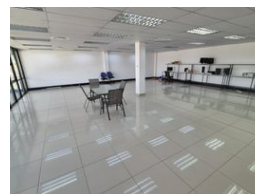
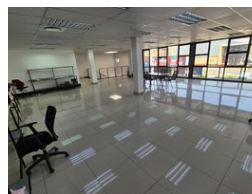
010 0354431

Office 40A  
Eden Meadows Complex  
1 Van Riebeeck Avenue  
Greenstone  
1609

875m<sup>2</sup> Warehouse To Let in North Riding



Web Ref CL13155



R70,000 pm

Gross Monthly Rental R70,000 Excl. VAT



0



0

## A-Grade 875m<sup>2</sup> Warehouse with Showroom in North Riding Business Park

Elevate your business with this top-tier 875m<sup>2</sup> warehouse, located in the highly desirable North Riding Business Park. Combining a modern office component with a stylish showroom, this versatile space is perfect for companies that need a professional front-end presence alongside efficient operational flow.

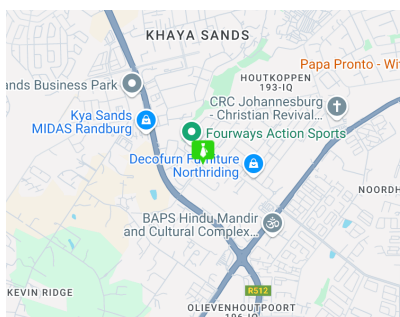
The warehouse features excellent height, a clean open-plan layout, and a large roller shutter door for seamless access. With 3-phase power, strong security, and access control within a well-maintained park, it's ideal for distribution, light manufacturing, or

## Features

**Zoning** Industrial

### Sizes

Floor Size	875m <sup>2</sup>
Land Size	45,000m <sup>2</sup>
Building Height	10m



<https://www.newpointproperty.co.za>