



Martin Montgomery
Candidate Property Practitioner
Registered with PPRA
(FFC 121 152 3)
0818542055

martin@newpointproperty.co.za

Contact Head Office

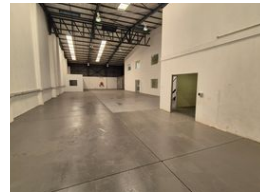
010 0354431

Office 40A
Eden Meadows Complex
1 Van Riebeeck Avenue
Greenstone
1609

842m² Warehouse To Let in North Riding



Web Ref CL13132



R57,256 pm

Gross Monthly Rental R57,256 Excl. VAT

2 8

Prime 842m² Freestanding Warehouse with Showroom & Office in Northlands Deco Park

Unlock the potential of this versatile 842m² freestanding facility in the prestigious Northlands Deco Park, North Riding. Perfectly blending warehouse functionality, a sleek showroom, and professional office space, this property is ideal for businesses seeking an all-in-one operational hub. Positioned for easy access to major routes, it offers excellent connectivity and convenience.

The warehouse boasts generous height, ideal for storage or light manufacturing, and features both an on-grade roller shutter door and a dock leveler for streamlined logistics. Inside, the modern showroom and well-appointed offices create an inviting space for clients and staff alike. With robust three-phase power and a flexible layout, this property delivers a rare combination of practicality

Features

Zoning Industrial

Interior

Power 3 Phase Yes
Power Amps 100

Exterior

Security Yes
Covered Parking Bays 2
Open Parking Bays 8

Sizes

Floor Size 842m²
Land Size 1,211m²
Building Height 8m



<https://www.newpointproperty.co.za>