



Martin Montgomery

Candidate Property Practitioner
Registered with PPRA
(FFC 121 152 3)

0818542055

martin@newpointproperty.co.za

Contact Head Office

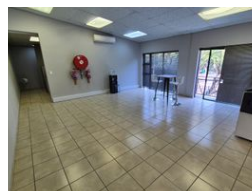
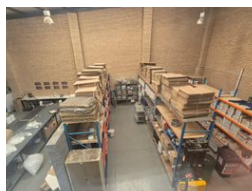
010 0354431

Office 40A
Eden Meadows Complex
1 Van Riebeeck Avenue
Greenstone
1609

710m² Warehouse To Let in North Riding



Web Ref MM710TL359NBP



R55,380 pm

Gross Monthly Rental R55,380 Excl. VAT
Monthly Rates R6,800 Excl. VAT

Monthly Levy R783 Excl. VAT



6



12

710m² Warehouse To Let in Northlands Business Park

Check out this outstanding industrial facility offering 710m² of well-designed space on a 1,017m² stand, perfect for businesses needing both warehouse and office functionalities. The 373m² warehouse features impressive height, abundant natural light, a large roller shutter door, and 3-phase 80-amp power, catering to a variety of industrial needs. The 337m² office area includes a professional reception, boardroom, kitchenette, restrooms, and air conditioning for a comfortable and efficient workspace.

Located strategically in North Riding, the property provides shaded parking and convenient truck access. It's available for sale at R6,745,000.00 (excluding VAT) or for lease at R55,380.00 per month (excluding VAT and utilities). Additional costs encompass

Features

Zoning Industrial

Interior

Power 3 Phase Yes
Power Amps 100

Exterior

Security Yes
Covered Parking Bays 6
Open Parking Bays 12

Sizes

Floor Size 710m²
Land Size 1,017m²
Building Height 10m

