



**Martin Montgomery**

Candidate Property Practitioner  
Registered with PPRA  
(FFC 121 152 3)

0818542055

[martin@newpointproperty.co.za](mailto:martin@newpointproperty.co.za)

Contact Head Office

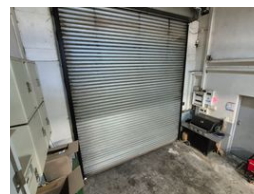
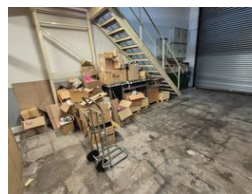
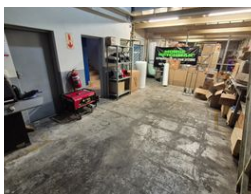
010 0354431

Office 40A  
Eden Meadows Complex  
1 Van Riebeeck Avenue  
Greenstone  
1609

## 410m² Warehouse To Let in North Riding



Web Ref CL13019



R31,000 pm

Gross Monthly Rental R31,000 Excl. VAT



## Neat 410m² Mini Warehouse To Let in Sought-After Northlands Business Park

This 410m² mini warehouse is now available for lease in the secure and well-maintained Northlands Business Park, offering a clean and professional industrial environment. The unit includes a modern office component, providing a polished workspace alongside your operational needs. With 3-phase power and an on-grade roller shutter door, the property is well-equipped for smooth loading, unloading, and daily operations.

Ideal for light industrial, storage, or distribution businesses, this space also features staff ablutions and excellent security with access control at the park entrance. Located in a prime industrial node with easy access to major routes, it's a smart choice for

## Features

**Zoning** Industrial

### Interior

Power 3 Phase Yes  
Power Amps 100

### Exterior

Security Yes

### Sizes

Floor Size 410m²  
Land Size 410m²  
Building Height 8m

