



Martin Montgomery
 Candidate Property Practitioner
 Registered with PPRA
 (FFC 121 152 3)
 0818542055

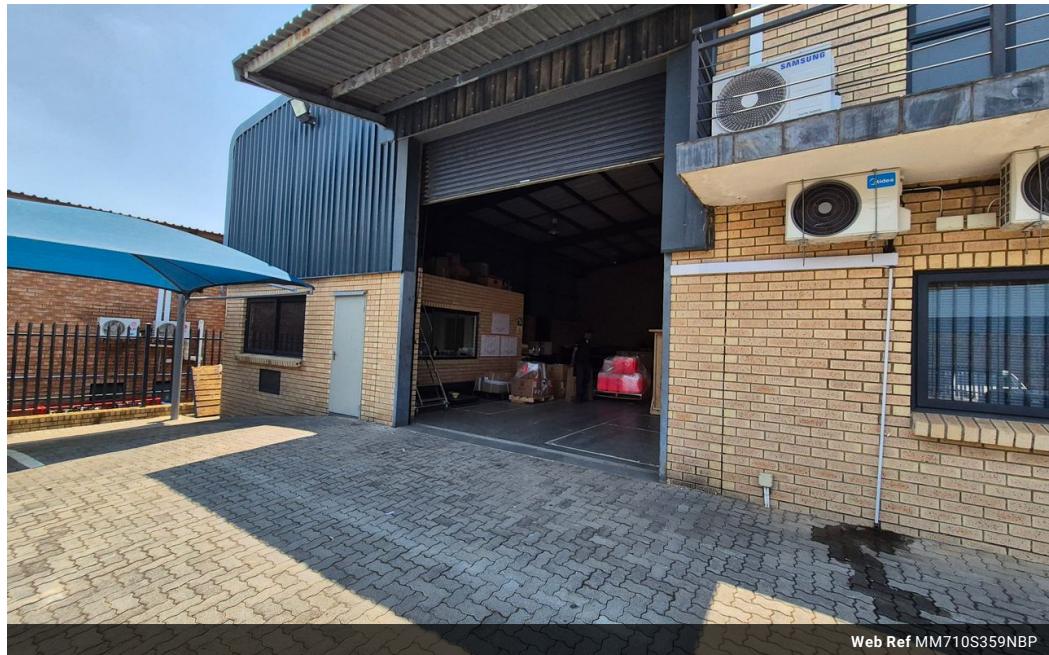
martin@newpointproperty.co.za

Contact Head Office

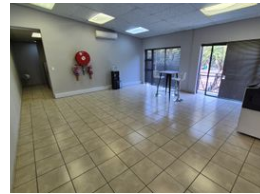
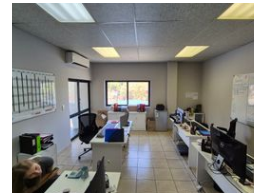
010 0354431

Office 40A
 Eden Meadows Complex
 1 Van Riebeeck Avenue
 Greenstone
 1609

710m² Warehouse To Let in North Riding



Web Ref MM710S359NBP



R55,380 pm

Gross Monthly Rental R55,380 Excl. VAT

2 8

710m² Warehouse To Let and For Sale In Northlands Business Park

This exceptional industrial facility offers 710m² of well-designed space on a 1,017m² stand, ideal for businesses requiring both warehouse and office functionality. The 373m² warehouse boasts excellent height, ample natural light, a high roller shutter door, and 3-phase 80-amp power, making it suitable for various industrial operations. The 337m² office component features a professional reception area, a boardroom, a kitchenette, restrooms, and air conditioning, ensuring a comfortable and efficient workspace.

Strategically located in North Riding, the property provides shaded parking and easy truck access. Available for sale at R6,745,000.00 (excl. VAT) or lease at R55,380.00/month (excl. VAT & utilities), additional costs include rates and taxes

Features

Zoning Industrial

Interior

Power 3 Phase	Yes
Power Amps	100

Exterior

Security	Yes
Covered Parking Bays	2
Open Parking Bays	8

Sizes

Floor Size	710m ²
Land Size	1,017m ²
Building Height	8m