



William Christie
Candidate Property
Practitioner
Registered with PPRA
(FFC 121 152 2)
0740552244

william@newpointproperty.co.za

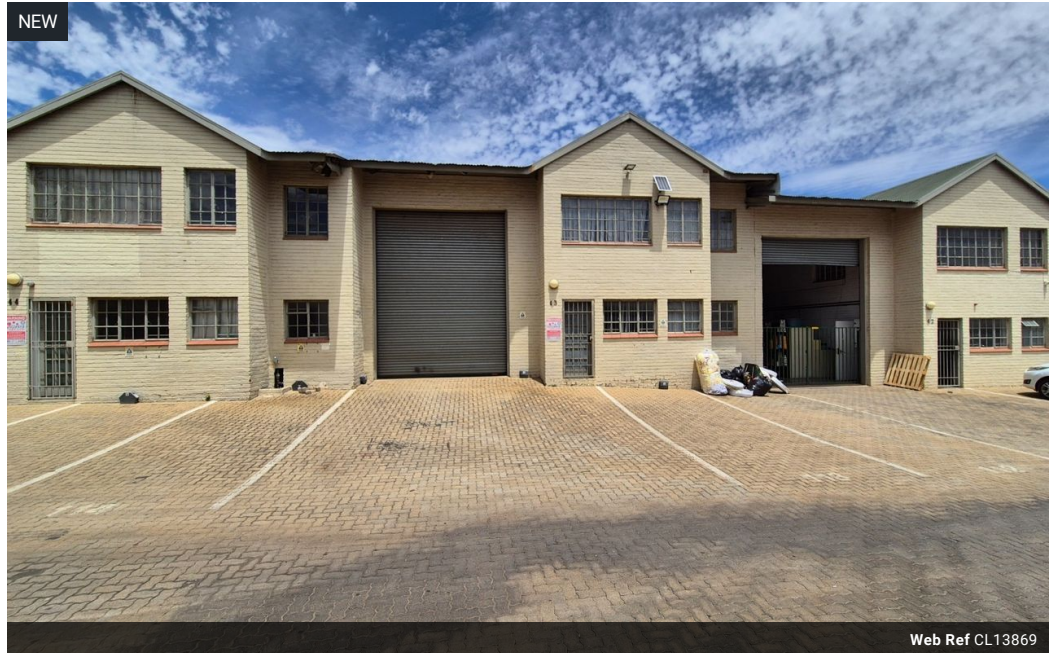
Contact Head Office

010 0354431

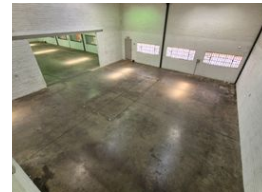
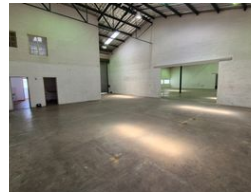
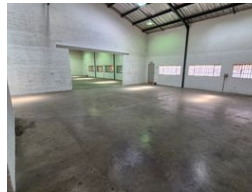
Office 40A
Eden Meadows Complex
1 Van Riebeeck Avenue
Greenstone
1609

237m² Warehouse To Let in Kya Sands

NEW



Web Ref CL13869



R13,110 pm

Gross Monthly Rental R13,110 Excl. VAT

Monthly Rates R1,055 Excl. VAT



0



4

Neat 237m² Warehouse To Let in Secure Kya Sands Park

This well-maintained 237m² warehouse is ideal for storage, light industrial work, or distribution. It features a large roller shutter door for easy access, a practical office space for admin needs, and a clean, functional layout to support your day-to-day operations.

Located in a secure park with 24-hour access control, the unit offers three-phase power and good internal height for racking or stacking. With easy access to major routes, this space is perfect for growing businesses seeking efficiency and security. Enquire

Features

Zoning Industrial

Interior

Power 3 Phase	Yes
Power Amps	100

Exterior

Security	Yes
Open Parking Bays	4

Sizes

Floor Size	237m ²
Land Size	2,000m ²
Building Height	8m



<https://www.newpointproperty.co.za>