



William Christie
Candidate Property
Practitioner
Registered with PPRA
(FFC 121 152 2)
0740552244

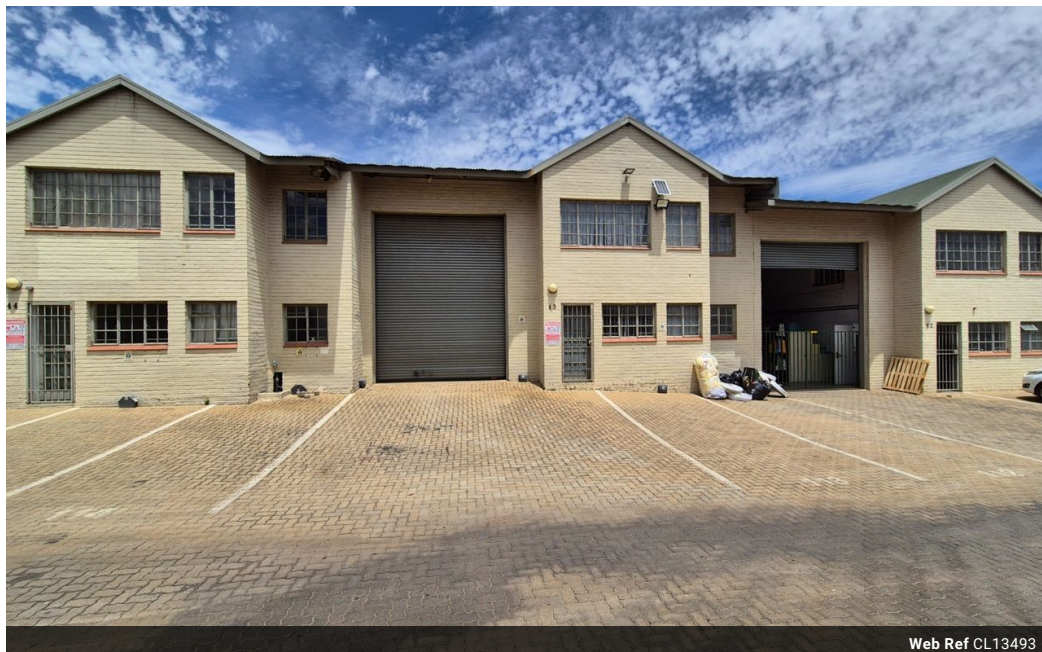
william@newpointproperty.co.za

Contact Head Office

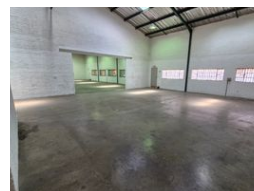
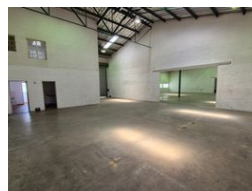
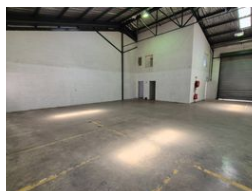
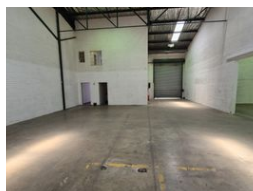
010 0354431

Office 40A
Eden Meadows Complex
1 Van Riebeeck Avenue
Greenstone
1609

237m² Warehouse To Let in Kya Sands



Web Ref CL13493



R13,110 pm

Gross Monthly Rental R13,110 Excl. VAT

Monthly Rates R1,055 Excl. VAT



0



4

Clean & Compact 237m² Warehouse in Secure Kya Sands Park

Unlock efficient operations with this immaculate 237m² warehouse located in the popular Kya Sands Park. Featuring a large roller shutter door for seamless loading and a compact office for admin tasks, the unit is perfectly suited for light industrial use, storage, or distribution. The clean interior and practical layout make for a highly functional working environment.

Set within a secure, 24-hour access-controlled industrial park, the property offers peace of mind along with three-phase power and ample internal height for vertical stacking. Conveniently positioned with quick access to key arterial routes, this space is an excellent opportunity for growing businesses in need of convenience, security, and operational ease. Contact us today to schedule

Features

Zoning Industrial

Interior

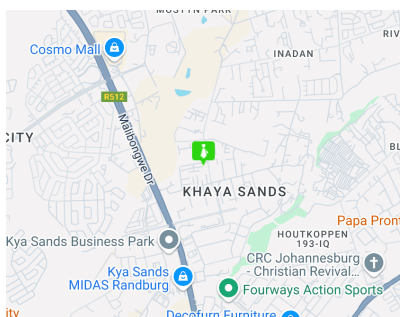
Power 3 Phase	Yes
Power Amps	100

Exterior

Security	Yes
Open Parking Bays	4

Sizes

Floor Size	237m²
Land Size	2,000m²
Building Height	8m



<https://www.newpointproperty.co.za>