



Martin Montgomery
 Candidate Property
 Practitioner
 Registered with PPRA
 (FFC 121 152 3)
 0818542055

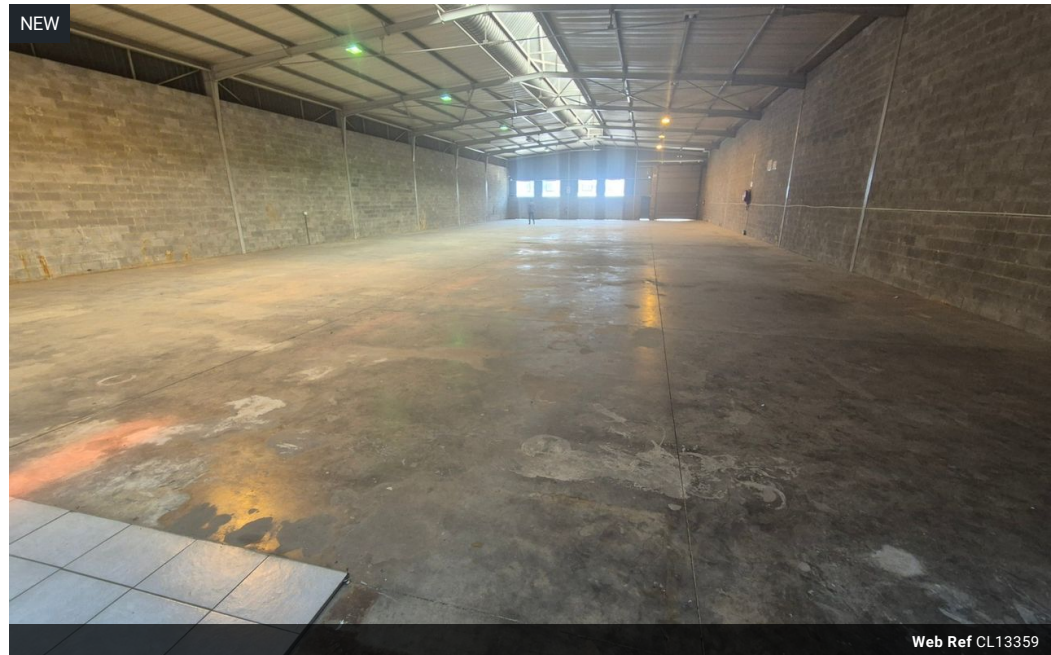
martin@newpointproperty.co.za

Contact Head Office

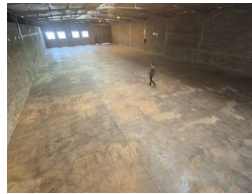
010 0354431

Office 40A
 Eden Meadows Complex
 1 Van Riebeeck Avenue
 Greenstone
 1609

995m² Warehouse To Let in Kya Sands



Web Ref CL13359



R54,565 pm

Gross Monthly Rental R54,565 Excl. VAT

0 8

995m² Warehouse with Power & Optional Yard in Kya Sands – Ideal for Manufacturing or Logistics

Elevate your operations with this 995m² warehouse in the vibrant industrial hub of Kya Sands. Boasting high ceilings, a powerful 200-amp three-phase power supply, and a large on-grade roller shutter door, this facility is tailor-made for manufacturing, storage, or distribution.

The property includes well-maintained office space for seamless admin integration, with the added benefit of an optional 1,000m² yard—ideal for truck access or overflow storage. Strategically located with easy access to key transport routes, this warehouse

Features

Zoning Industrial

Interior

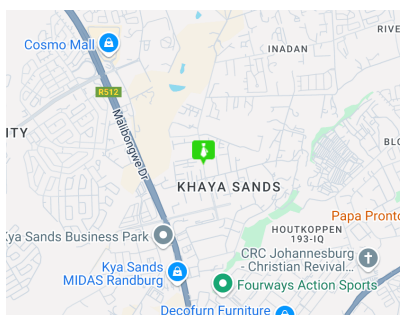
Power 3 Phase	Yes
Power Amps	200

Exterior

Security	Yes
Open Parking Bays	8

Sizes

Floor Size	995m ²
Land Size	15,000m ²



<https://www.newpointproperty.co.za>