



Martin Montgomery

Candidate Property Practitioner
Registered with PPRA
(FFC 121 152 3)

0818542055

martin@newpointproperty.co.za

Contact Head Office

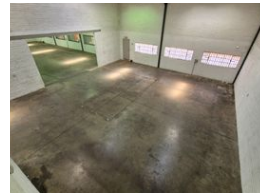
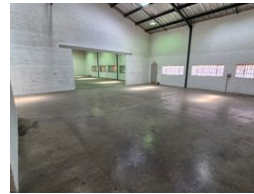
010 0354431

Office 40A
Eden Meadows Complex
1 Van Riebeeck Avenue
Greenstone
1609

237m² Warehouse To Let in Kya Sands



Web Ref CL13133



R13,110 pm

Gross Monthly Rental R13,110 Excl. VAT

Monthly Rates R1,055 Excl. VAT



0



4

Pristine 237m² Warehouse in Secure Kya Sands Park – Ideal for Storage & Light Industry

Take advantage of this immaculate 237m² warehouse, perfectly positioned in the highly sought-after Kya Sands Park. With a large roller shutter door for easy loading and a compact office space for admin tasks, this unit is ideal for storage, distribution, or light industrial use. Its clean, efficient layout supports smooth daily operations.

The property offers excellent security in a 24-hour access-controlled park and is equipped with three-phase power and generous internal height for vertical racking. Conveniently located in a busy industrial node with quick access to main roads, this warehouse

Features

Zoning Industrial

Interior

Power 3 Phase	Yes
Power Amps	100

Exterior

Security	Yes
Open Parking Bays	4

Sizes

Floor Size	237m ²
Land Size	2,000m ²
Building Height	8m

