



Martin Montgomery

Candidate Property Practitioner
Registered with PPRA
(FFC 121 152 3)

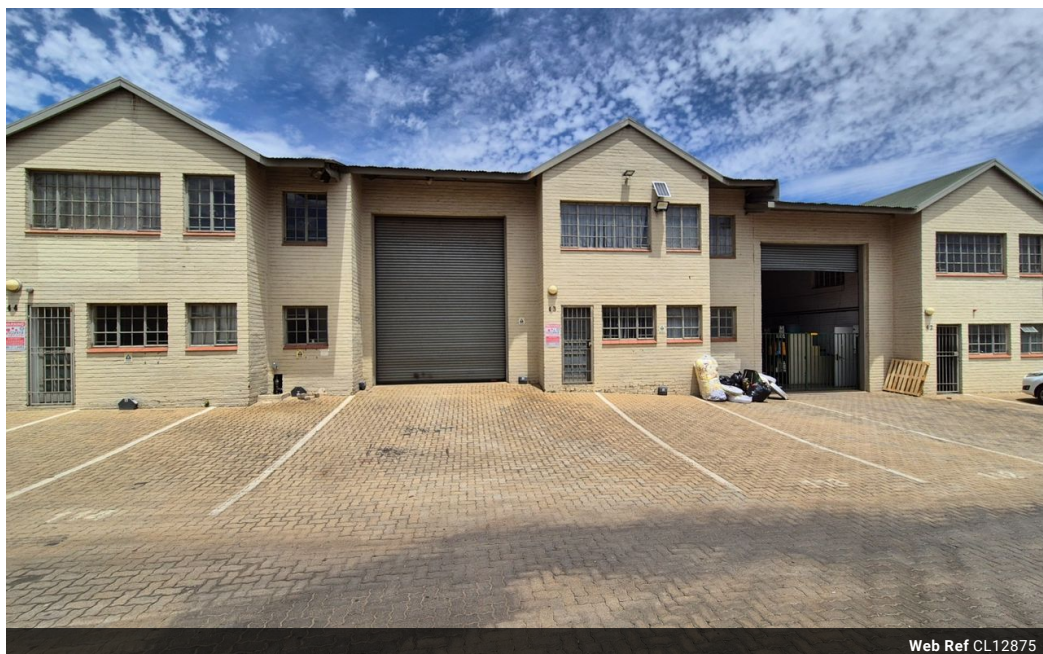
0818542055

martin@newpointproperty.co.za

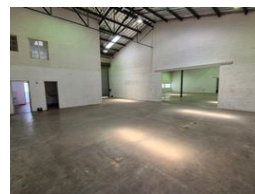
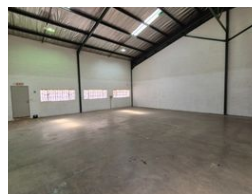
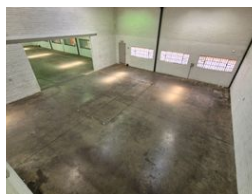
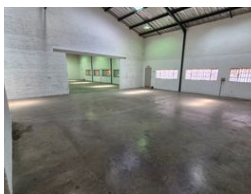
Contact Head Office

010 0354431

Office 40A
Eden Meadows Complex
1 Van Riebeeck Avenue
Greenstone
1609



Web Ref CL12875



R13,110 pm

Gross Monthly Rental R13,110 Excl. VAT

Monthly Rates R1,055 Excl. VAT



0



4

Neat & Secure 237m² Warehouse in Kya Sands – Ideal for Storage & Light Industrial Use

Position your business for success with this pristine 237m² warehouse in the sought-after Kya Sands Park. Offering a well-organized workspace with a high roller shutter door for seamless loading, the unit is perfectly suited for storage, distribution, or light industrial operations. A compact office area is included, providing a functional space for day-to-day administration.

Set in a secure, access-controlled park, the property features three-phase power and impressive roof height, allowing for efficient vertical storage. Located in a vibrant industrial hub with excellent connectivity, this warehouse combines practicality with peace of

Features

Zoning Industrial

Interior

Power 3 Phase	Yes
Power Amps	100

Exterior

Security	Yes
Open Parking Bays	4

Sizes

Floor Size	237m ²
Land Size	2,000m ²
Building Height	8m