



William Christie
Candidate Property
Practitioner
Registered with PPRA
(FFC 121 152 2)
0740552244

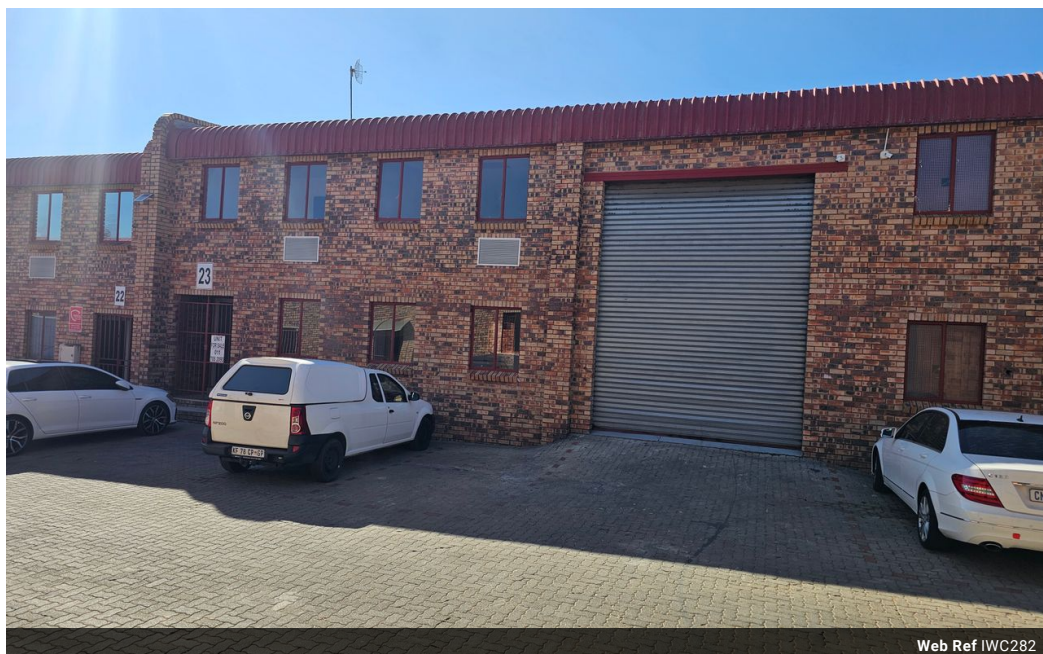
william@newpointproperty.co.za

Contact Head Office

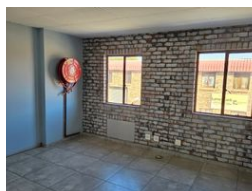
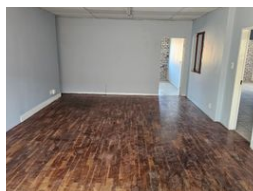
010 0354431

Office 40A
Eden Meadows Complex
1 Van Riebeeck Avenue
Greenstone
1609

282m² Factory To Let in Kya Sands



Web Ref IWC282



R15,510 pm

Gross Monthly Rental R15,510 Excl. VAT



Well-Priced Industrial Unit Available in the Heart of Kya Sands

Located in the heart of Kya Sands, this secure and well-maintained industrial unit offers a total of 282m², comprising 113m² of office space and 169m² of factory floor. The unit is equipped with 30 amps of three-phase power, making it ideal for light manufacturing operations.

The property features multiple office areas along with ablution facilities on both the ground and first floors. A large roller shutter door provides easy access for larger vehicles, ensuring smooth loading and offloading.

Features

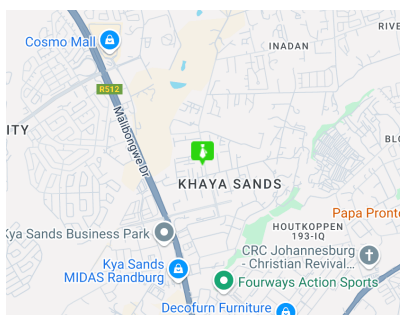
Zoning Industrial

Interior

Floor Loading Cap. 5 Tn/m²
Power 3 Phase Yes
Power Amps 30

Sizes

Floor Size 282m²
Land Size 282m²
Building Height 5m



<https://www.newpointproperty.co.za>