

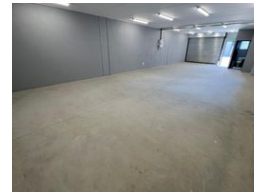
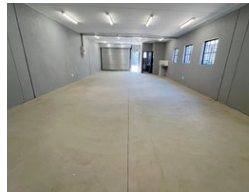


Ethan Willett
0844752021
ethan.w@newpointproperty.co.za

Contact Head Office

010 0354431

Office 40A
Eden Meadows Complex
1 Van Riebeeck Avenue
Greenstone
1609



R11,937 pm

Gross Monthly Rental R11,937 Excl. VAT

0 0

Affordable 95m² Industrial Unit in Secure Business Park – Available Immediately

Discover a practical and cost-effective space with this 95m² mini industrial unit, available to rent for R11,937 plus VAT and utilities. Ideal for storage or light industrial use, it features a spacious open-plan layout, 60 amps of three-phase power, and an on-grade roller shutter door for easy access. Situated in a secure, well-maintained business park, this unit offers a safe and professional environment for your operations.

The property includes two toilets and a convenient kitchenette, making it a comfortable workspace for small teams. Perfectly suited for startups, small businesses, or those needing overflow storage, this unit is ready for immediate occupation with minimal

Features

Zoning Industrial

Interior

Floor Loading Cap.	1 Tn/m ²
Power 3 Phase	Yes
Power Amps	60

Sizes

Floor Size	95m ²
------------	------------------

Extras

24 Hour Access