



Warrick Botha
 0849752023
warrick@newpointproperty.co.za

Contact Head Office

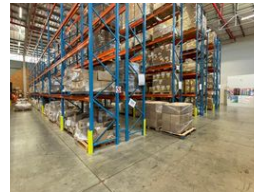
010 0354431

Office 40A
 Eden Meadows Complex
 1 Van Riebeeck Avenue
 Greenstone
 1609

1,818m² Warehouse To Let in Randjespark



Web Ref CL13703



R174,982 pm

Gross Monthly Rental R174,982 Excl. VAT

0 20

1,818m² Industrial Facility in Randjespark – Secure, Functional & Logistics-Friendly

This 1,818m² industrial property in Randjespark, Midrand, offers a flexible space ideal for warehousing, distribution, or light manufacturing. The large open-plan warehouse features good height, natural lighting, multiple roller shutter doors, a full sprinkler system, and a strong three-phase power supply—designed for operational efficiency and safety.

The property includes a neat office component, staff ablutions, ample parking, and wide access routes for smooth truck movement. Situated in a secure, access-controlled park with 24-hour security, it's conveniently located near the N1 and R101

Features

Zoning Industrial

Interior

Floor Loading Cap. 1 Tn/m²
 Power 3 Phase Yes
 Power Amps 125

Exterior

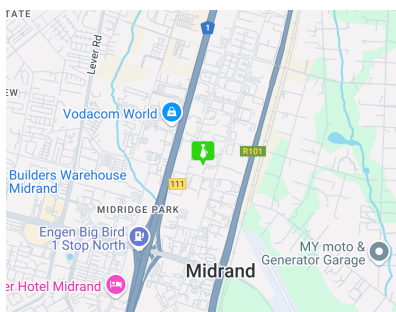
Security Yes
 Open Parking Bays 20

Sizes

Floor Size 1,818m²
 Land Size 5,000m²

Extras

24 Hour Response Backup Water Boomed Area Guard Guard House Balcony



<https://www.newpointproperty.co.za>