



Warrick Botha
0849752023
warrick@newpointproperty.co.za

Contact Head Office

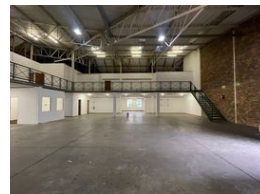
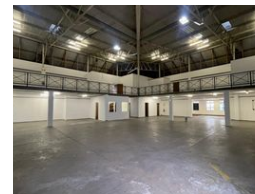
010 0354431

Office 40A
Eden Meadows Complex
1 Van Riebeeck Avenue
Greenstone
1609

977m² Warehouse To Let in Randjespark



Web Ref CL13509



R48,850 pm

Gross Monthly Rental R48,850 Excl. VAT

Monthly Rates R1 Excl. VAT



0



12

Versatile 977m² Warehouse in Prime Randjespark Location – Ideal for Growing Operations

Unlock your business potential with this well-positioned 977m² industrial warehouse in Randjespark, Midrand. Perfectly suited for storage, light manufacturing, or distribution, the facility features a spacious layout, high roller shutter door, and reliable three-phase power—ensuring smooth, efficient operations from day one.

The neat office component provides an ideal base for admin and management functions, helping you maintain workflow and professionalism. Conveniently located near major transport routes and highways, this secure, accessible space offers everything a

Features

Zoning Industrial

Interior

Floor Loading Cap. 1 Tn/m²
Power 3 Phase Yes
Power Amps 80

Exterior

Security Yes
Open Parking Bays 12

Sizes

Floor Size 977m²
Land Size 5,000m²

Extras

Guard Guard House Office Warehouse



<https://www.newpointproperty.co.za>