



Warrick Botha
 0849752023
warrick@newpointproperty.co.za

Contact Head Office

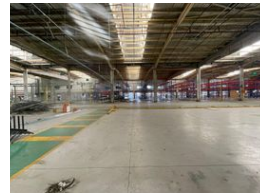
010 0354431

Office 40A
 Eden Meadows Complex
 1 Van Riebeeck Avenue
 Greenstone
 1609

11,924m² Warehouse To Let in Halfway House



Web Ref WB11924HH9TL



R1,073,160 pm

Gross Monthly Rental R1,073,160 Excl. VAT



0



170

11 924m² Industrial Warehouse Available TO LET

This expansive 11,924m² industrial warehouse in Halfway House, Midrand, presents a rare opportunity for large-scale operators seeking premium space with excellent infrastructure. The property boasts outstanding highway exposure, offering unparalleled visibility from the N1—ideal for companies looking to strengthen their brand presence. Designed for efficiency and safety, the warehouse is equipped with a full sprinkler system and three-phase power, making it well-suited for warehousing, distribution, or manufacturing operations.

In addition to the vast warehouse floor, the facility includes ample office space that caters to both executive and administrative functions. Generous parking bays are available for staff and visitors, enhancing convenience and accessibility. Located in a well-

Features

Zoning Industrial

Interior

| | |
|--------------------|---------------------|
| Floor Loading Cap. | 1 Tn/m ² |
| Air Conditioning | Yes |
| Power 3 Phase | Yes |
| Power Amps | 600 |

Exterior

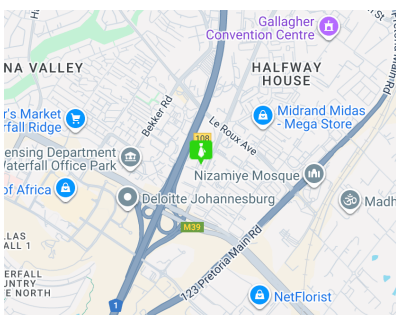
| | |
|-------------------|-----|
| Security | Yes |
| Open Parking Bays | 170 |

Sizes

| | |
|------------|----------------------|
| Floor Size | 11,924m ² |
| Land Size | 20,000m ² |

Extras

24 Hour Response Air Conditioner Air Conditioning Unit Boomed Area Freestanding Guard Guard House Sprinkler System



<https://www.newpointproperty.co.za>