



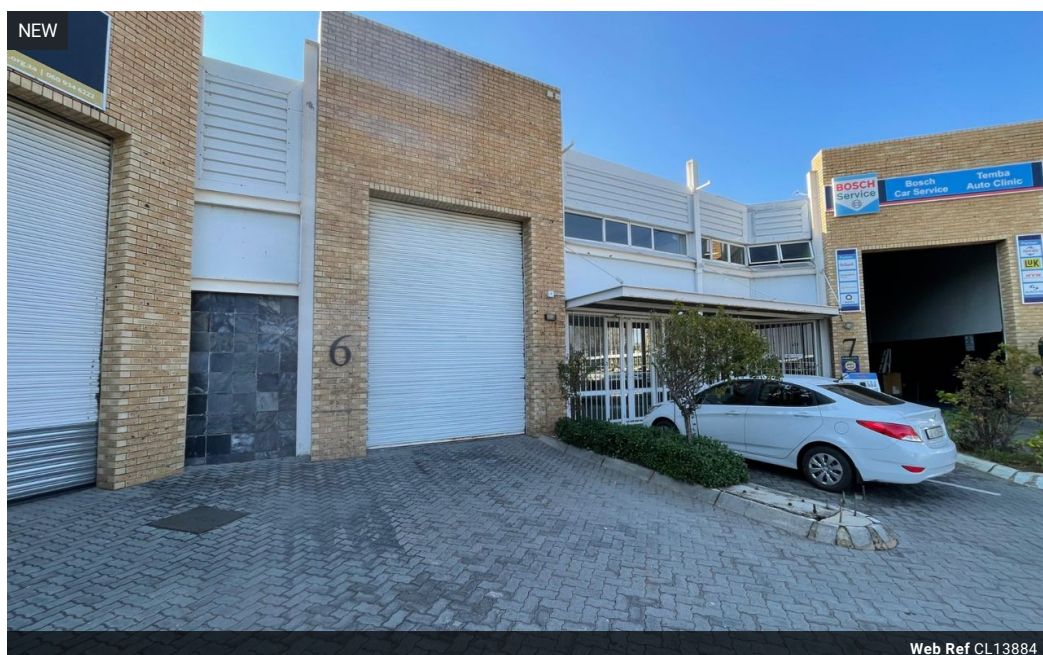
Warrick Botha
0849752023
warrick@newpointproperty.co.za

Contact Head Office

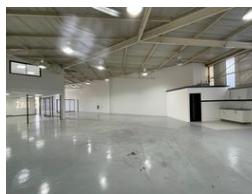
010 0354431

Office 40A
Eden Meadows Complex
1 Van Riebeeck Avenue
Greenstone
1609

613m² Warehouse To Let in Halfway House



Web Ref CL13884



R54,000 pm

Gross Monthly Rental R54,000 Excl. VAT

4 1

Versatile 613m² Industrial Unit in Halfway House, Midrand

This 613m² unit offers a functional layout perfect for light industrial, storage, or distribution operations. The warehouse features excellent height for stacking, a roller shutter door for smooth loading, and three-phase power to meet demanding operational needs.

The property includes a dedicated office component, providing a clean and professional space for admin tasks. Conveniently located in the well-established Halfway House industrial area, with quick access to the N1 and Allandale Road, this unit combines

Features

Zoning Industrial

Interior

Floor Loading Cap.	1 Tn/m ²
Air Conditioning	Yes
Power 3 Phase	Yes
Power Amps	80

Exterior

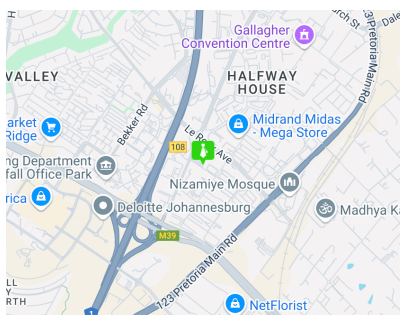
Security	Yes
Covered Parking Bays	4
Open Parking Bays	1

Sizes

Floor Size	613m ²
Land Size	6,000m ²

Extras

24 Hour Response Air Conditioner Air Conditioning Unit Office Warehouse



<https://www.newpointproperty.co.za>