



Warrick Botha
 0849752023
warrick@newpointproperty.co.za

Contact Head Office

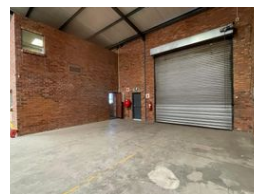
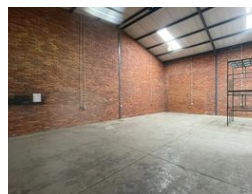
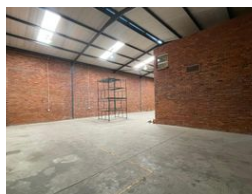
010 0354431

Office 40A
 Eden Meadows Complex
 1 Van Riebeeck Avenue
 Greenstone
 1609

600m² Warehouse To Let in Halfway House



Web Ref WB600HHCHMTL



R45,000 pm

Gross Monthly Rental R45,000 Excl. VAT

6 0

600m² Unit Available To LET in Midrand

This 600m² industrial unit in Halfway House, Midrand, offers a functional and versatile space suitable for a variety of business operations. The warehouse features good height for efficient storage and racking, as well as excellent natural lighting that creates a bright and energy-efficient working environment. Two roller shutter doors provide seamless access for loading and offloading, ensuring smooth operational flow for logistics or manufacturing activities. The unit is also equipped with three-phase power, supporting businesses with equipment or machinery needs.

The property includes a neat office component, providing space for administration and management functions, along with ablution facilities for staff convenience. Its practical layout ensures an efficient balance between office and warehouse operations. Located

Features

Zoning Industrial

Interior

Floor Loading Cap. 1 Tn/m²
 Power 3 Phase Yes
 Power Amps 63

Exterior

Security Yes
 Covered Parking Bays 6

Sizes

Floor Size 600m²
 Land Size 2,000m²

Extras

24 Hour Response Air Conditioner Air Conditioning Unit Balcony Guard Guard House Boomed Area



<https://www.newpointproperty.co.za>