



Warrick Botha
0849752023
warrick@newpointproperty.co.za

Contact Head Office

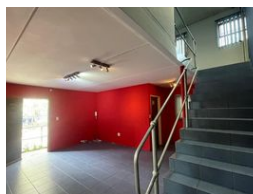
010 0354431

Office 40A
Eden Meadows Complex
1 Van Riebeeck Avenue
Greenstone
1609

298m² Warehouse To Let in Halfway House



Web Ref CL13432



R28,310 pm

Gross Monthly Rental R28,310 Excl. VAT Monthly Levy R4,219.9 Excl. VAT

0 4

298m² Functional Warehouse & Office Unit in Secure Industrial Park

Ideal for small to medium-sized businesses, this clean and well-maintained 298m² unit offers a balanced mix of warehouse space, modern offices, and additional storage. With built-in ablution facilities and a practical layout, it's ready for immediate occupation and perfectly suited for light industrial, distribution, or service-based operations.

Located in a secure park with 24-hour access control, the property ensures peace of mind while providing excellent connectivity via the nearby N1 highway—linking Johannesburg and Pretoria with ease. Don't miss this efficient and accessible workspace—

Features

Zoning Industrial

Interior

Floor Loading Cap.	1 Tn/m²
Air Conditioning	Yes
Power 3 Phase	Yes
Power Amps	63

Exterior

Security	Yes
Open Parking Bays	4

Sizes

Floor Size	298m²
Land Size	298m²

Extras

24 Hour Access Air Conditioner Air Conditioning Unit Boomed Area Guard Guard House

