



**Warrick Botha**  
 0849752023  
[warrick@newpointproperty.co.za](mailto:warrick@newpointproperty.co.za)

Contact Head Office

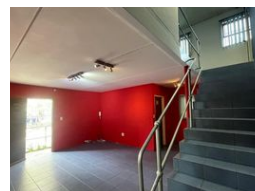
010 0354431

Office 40A  
 Eden Meadows Complex  
 1 Van Riebeeck Avenue  
 Greenstone  
 1609

## 298m<sup>2</sup> Warehouse To Let in Halfway House



Web Ref CL13105



R28,310 pm

**Gross Monthly Rental** R28,310 Excl. VAT    **Monthly Levy** R4,219.9 Excl. VAT

0    4

## Versatile 298m<sup>2</sup> Industrial Unit To Let in Prime Midrand Location

Perfect for small to medium-sized businesses, this well-maintained 298m<sup>2</sup> unit features a practical combination of warehouse space, modern offices, and additional storage. The layout includes convenient ablution facilities, making it a clean, functional, and move-in-ready space for a range of operational needs.

Situated in a secure industrial park with 24-hour security, this property offers excellent protection for your assets. With easy access to the N1 highway and key transport routes, it provides seamless connectivity between Johannesburg and Pretoria—an ideal base

## Features

**Zoning** Industrial

### Interior

Floor Loading Cap.	1 Tn/m <sup>2</sup>
Air Conditioning	Yes
Power 3 Phase	Yes
Power Amps	63

### Exterior

Security	Yes
Open Parking Bays	4

### Sizes

Floor Size	298m <sup>2</sup>
Land Size	298m <sup>2</sup>

### Extras

24 Hour Response Air Conditioner Air Conditioning Unit Boomed Area Guard Guard House

