



**Warrick Botha**  
 0849752023  
[warrick@newpointproperty.co.za](mailto:warrick@newpointproperty.co.za)

Contact Head Office

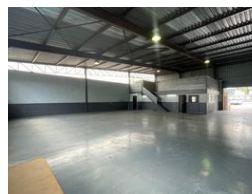
010 0354431

Office 40A  
 Eden Meadows Complex  
 1 Van Riebeeck Avenue  
 Greenstone  
 1609

## 362m<sup>2</sup> Warehouse To Let in Halfway House



Web Ref CL13045



R28,960 pm

**Gross Monthly Rental** R28,960 Excl. VAT  
**Monthly Rates** R1 Excl. VAT

**Monthly Levy** R1 Excl. VAT

0 4

### Versatile 362m<sup>2</sup> Industrial Unit with Mezzanine in Prime Midrand Location

This well-positioned 362m<sup>2</sup> industrial unit in Halfway House, Midrand, offers the perfect mix of warehouse and office space for growing businesses. The warehouse boasts excellent height and includes a mezzanine level—ideal for additional storage or office use. A neat, dedicated office area provides a comfortable and professional environment for daily operations.

The unit also features a kitchenette and ablution facilities, ensuring convenience for staff. Located in a sought-after industrial hub with easy access to major routes like the N1 and Allandale Road, this space is ideal for light manufacturing, warehousing, or

### Features

**Zoning** Industrial

#### Interior

Floor Loading Cap. 1 Tn/m<sup>2</sup>  
 Power 3 Phase Yes  
 Power Amps 80

#### Exterior

Security Yes  
 Open Parking Bays 4

#### Sizes

Floor Size 362m<sup>2</sup>  
 Land Size 5,000m<sup>2</sup>

#### Extras

24 Hour Response Guard Guard House

