



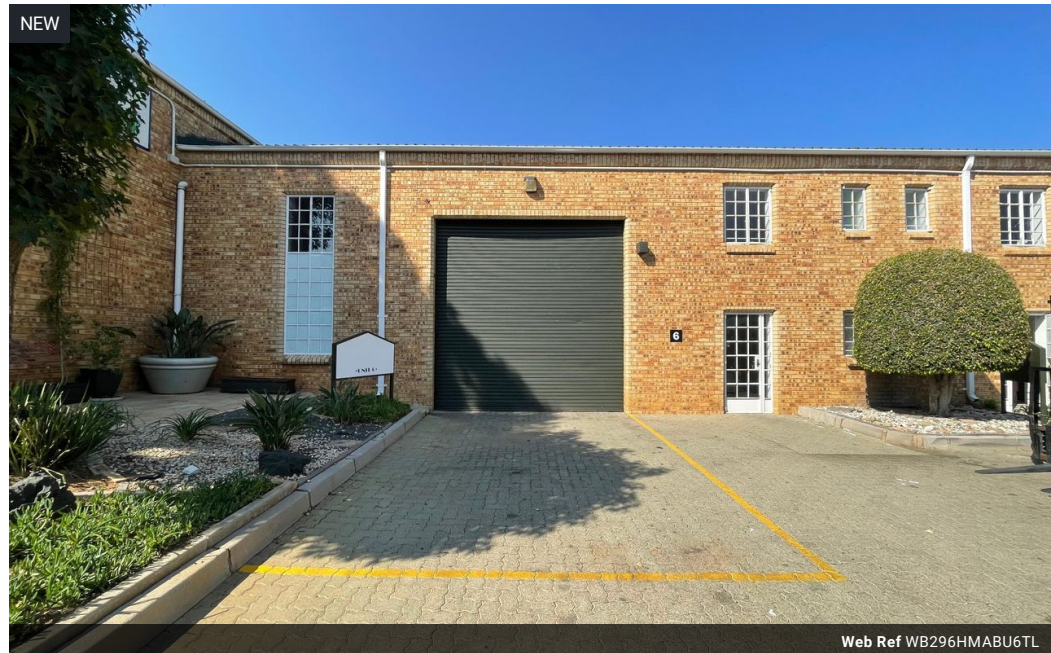
Warrick Botha
0849752023
warrick@newpointproperty.co.za

Contact Head Office

010 0354431

Office 40A
Eden Meadows Complex
1 Van Riebeeck Avenue
Greenstone
1609

296m² Warehouse To Let in Halfway House



Web Ref WB296HMABU6TL



R23,680 pm

Gross Monthly Rental R23,680 Excl. VAT

0 6

296m² Industrial Unit Available To Let in Halfway House, Midrand

This 296m² industrial unit in Halfway House, Midrand, offers a functional and efficient space well-suited for a variety of industrial operations, including warehousing, light manufacturing, or distribution. The unit features a well-proportioned warehouse with excellent height and abundant natural lighting, creating a bright and productive work environment. It is equipped with three-phase power to support a wide range of equipment and machinery, while the integrated office space provides a comfortable area for administrative functions. Staff facilities include well-maintained ablutions for added convenience.

Situated within a secure industrial park, the unit benefits from controlled access and on-site security, ensuring a safe operating

Features

Zoning Industrial

Interior

Floor Loading Cap. 1 Tn/m²
Power 3 Phase Yes
Power Amps 100

Exterior

Security Yes
Open Parking Bays 6

Sizes

Floor Size 296m²
Land Size 4,000m²

Extras

24 Hour Response Guard Guard House Boomed Area Office Warehouse Carport

