



**Warrick Botha**  
0849752023  
warrick@newpointproperty.co.za

Contact Head Office

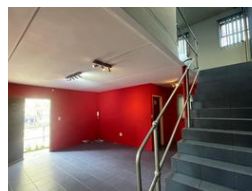
010 0354431

Office 40A  
Eden Meadows Complex  
1 Van Riebeeck Avenue  
Greenstone  
1609

## 298m² Warehouse To Let in Halfway House



Web Ref CL12785



R28,310 pm

**Gross Monthly Rental** R28,310 Excl. VAT **Monthly Levy** R4,219.9 Excl. VAT

0 4

## Secure & Practical 298m² Industrial Unit To Let in Halfway House, Midrand

Ideal for small to medium-sized businesses, this 298m² unit offers a well-balanced layout with a functional warehouse, modern office space, and additional storage to support a variety of operations. Thoughtfully designed with practical ablution facilities, it's a clean and efficient environment ready for immediate use.

Located in a secure industrial park with 24-hour security, the property ensures peace of mind and asset protection. With direct access to major routes, including the N1 highway, this Midrand gem provides unbeatable connectivity between Johannesburg and

## Features

**Zoning** Industrial

### Interior

Floor Loading Cap.	1 Tn/m²
Air Conditioning	Yes
Power 3 Phase	Yes
Power Amps	63

### Exterior

Security	Yes
Open Parking Bays	4

### Sizes

Floor Size	298m²
Land Size	298m²

### Extras

24 Hour Response Air Conditioner Air Conditioning Unit Boomed Area Guard Guard House

