



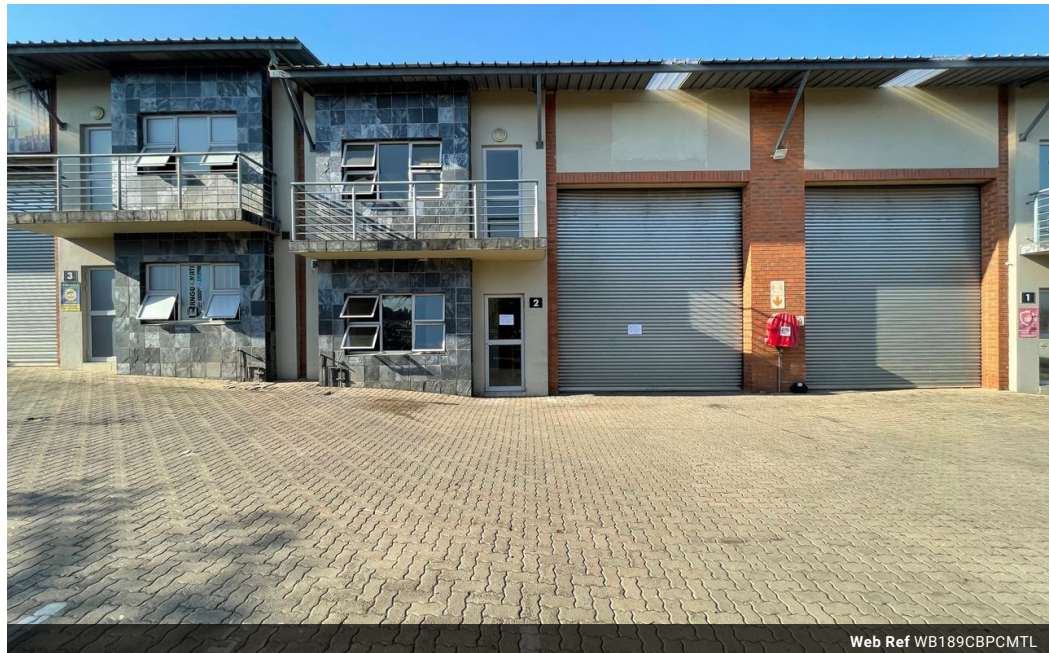
Warrick Botha
 0849752023
warrick@newpointproperty.co.za

Contact Head Office

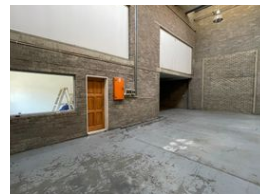
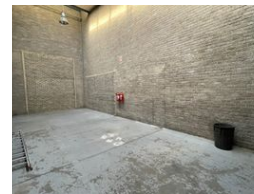
010 0354431

Office 40A
 Eden Meadows Complex
 1 Van Riebeeck Avenue
 Greenstone
 1609

189m² Warehouse To Let in Commercia



Web Ref WB189CBPCMTL



R16,065 pm

Gross Monthly Rental R16,065 Excl. VAT

0 4

189m² Industrial Unit Available TO LET

This 189m² industrial unit in Commercia, Midrand, is a compact yet highly functional space ideal for small businesses, light manufacturing, or storage operations. The warehouse area offers good height, allowing for efficient stacking or equipment use, and is supported by a reliable three-phase power supply, suitable for industrial machinery and operational demands.

The unit also includes a neat office component for administrative tasks, along with ablution facilities for staff convenience. Its layout ensures practical workflow between the warehouse and office space. Located in the well-connected Commercia industrial area, the unit offers quick access to major transport routes including the N1 and Old Pretoria Road, making it a great choice for

Features

Zoning Industrial

Interior

Floor Loading Cap. 1 Tn/m²
 Power 3 Phase Yes
 Power Amps 63

Exterior

Security Yes
 Open Parking Bays 4

Sizes

Floor Size 189m²
 Land Size 5,000m²

Extras

24 Hour Response Boomed Area Guard Guard House Balcony Office Warehouse

