



Warrick Botha
 0849752023
warrick@newpointproperty.co.za

Contact Head Office

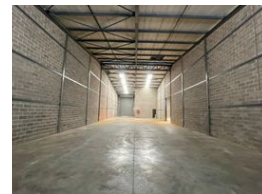
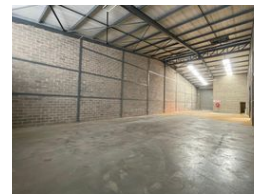
010 0354431

Office 40A
 Eden Meadows Complex
 1 Van Riebeeck Avenue
 Greenstone
 1609

386m² Warehouse To Let in Commercia



Web Ref WB386CBPU32NTL



R28,950 pm

Gross Monthly Rental R28,950 Excl. VAT

0 4

386m² Industrial Warehouse Available To Let in Commercia, Midrand

This 386m² industrial warehouse in Commercia, Midrand, offers a functional and efficient layout ideal for light industrial operations, warehousing, or distribution. The warehouse boasts good internal height, providing ample vertical space for storage or racking, and is enhanced by excellent natural lighting, creating a bright and productive work environment. Equipped with a three-phase power supply, the unit can accommodate a variety of machinery and operational needs. It also includes a neatly designed office component, offering space for administrative functions, along with well-maintained ablution facilities for staff.

Located in a secure, access-controlled boomed area, this property ensures a safe and well-managed environment for tenants. The

Features

Zoning Industrial

Interior

Floor Loading Cap. 1 Tn/m²
 Power 3 Phase Yes
 Power Amps 80

Exterior

Security Yes
 Open Parking Bays 4

Sizes

Floor Size 386m²
 Land Size 6,000m²

Extras

24 Hour Response Guard Guard House Boomed Area Office Warehouse

