



Kobus Louw
 0745422026
kobus@newpointproperty.co.za

Contact Head Office

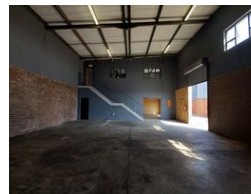
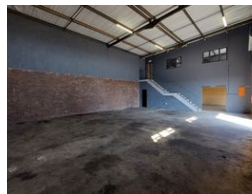
010 0354431

Office 40A
 Eden Meadows Complex
 1 Van Riebeeck Avenue
 Greenstone
 1609

273m² Warehouse To Let in Clayville



Web Ref CL13575



R20,475 pm

Gross Monthly Rental R20,475 Excl. VAT

0 0

Corner Unit with Yard in Secure Clayville Industrial Park – 273m² of Versatile Space

Position your business in this 273m² warehouse located in a secure industrial park in Clayville. The unit offers an open-plan warehouse floor with direct access via a single roller shutter door that connects to a well-equipped reception area, including a storeroom, bathroom, and kitchen—ideal for seamless day-to-day operations.

Upstairs, a functional office space features open-plan layout, additional bathrooms, and a second kitchen for staff convenience. As a corner unit, it enjoys the benefit of a private yard, providing extra space for storage or vehicle movement. Secure, practical, and

Features

Zoning Industrial

Interior

Floor Loading Cap.	1 Tn/m ²
Air Conditioning	Yes
Power 3 Phase	Yes
Power Amps	60

Exterior

Security	Yes
----------	-----

Sizes

Floor Size	273m ²
Land Size	5,000m ²

