



Nathan Broodryk
 0844223210
nathan@newpointproperty.co.za

Contact Head Office

010 0354431

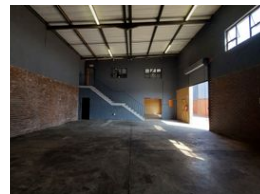
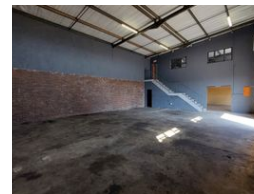
Office 40A
 Eden Meadows Complex
 1 Van Riebeeck Avenue
 Greenstone
 1609

273m² Warehouse To Let in Clayville

NEW



Web Ref NB273GIPU6



R20,475 pm

Gross Monthly Rental R20,475 Excl. VAT

0 0

273sqm warehouse available!

This 273 square meter warehouse is situated in a secure industrial park in Clayville, offering both safety and convenience. The warehouse features an open-plan floor, enhancing flexibility for various operations. It is accessible via a single roller door, which provides easy entry to both the warehouse and the adjoining reception area. The reception is equipped with a bathroom, a storeroom, and a kitchen, creating a functional and comfortable space for administrative tasks.

Upstairs, the office area is designed for versatility with open-plan space complemented by essential amenities including a kitchen and bathrooms. The unit's corner location provides additional advantages, featuring its own dedicated yard space for added

Features

Zoning Industrial

Interior

Floor Loading Cap.	1 Tn/m ²
Air Conditioning	Yes
Power 3 Phase	Yes
Power Amps	60

Exterior

Security	Yes
----------	-----

Sizes

Floor Size	273m ²
Land Size	5,000m ²

