



Nathan Broodryk
 0844223210
nathan@newpointproperty.co.za

Contact Head Office

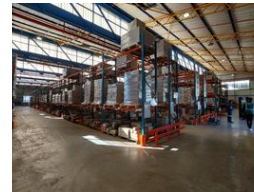
010 0354431

Office 40A
 Eden Meadows Complex
 1 Van Riebeeck Avenue
 Greenstone
 1609

2,562m² Workshop To Let in Clayville Industria



Web Ref CL12751



R166,530 pm

Gross Monthly Rental R166,530 Excl. VAT



Versatile 2,562m² Warehouse in Clayville – Secure, Spacious & Ready for Business

Located in a secure, well-maintained industrial park, this expansive 2,562m² warehouse in Clayville is perfectly suited for businesses needing functional and flexible space. Featuring four roller shutter doors, a dedicated loading area, and ample natural light, this facility is designed to optimize logistics and workflow. A generous yard at the rear of the property offers additional space for storage, parking, or operational use.

The layout maximizes usable warehouse space, making it ideal for storage, distribution, or light manufacturing. With reliable three-phase power, the facility is ready to support various industrial applications. Whether you are growing your operations or relocating

Features

Zoning Industrial

Interior

Floor Loading Cap.	1 Tn/m ²
Power 3 Phase	Yes
Power Amps	250

Exterior

Security	Yes
Covered Parking Bays	10
Open Parking Bays	10

Sizes

Floor Size	2,562m ²
Land Size	30,000m ²

