

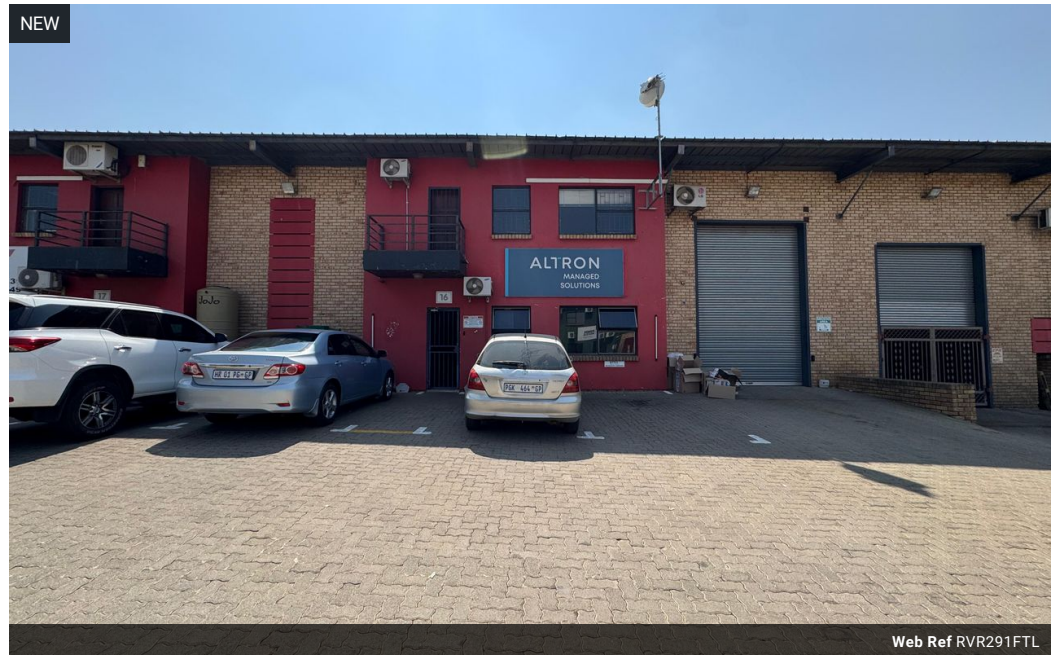


Ryan Van Rensburg
0846482022
ryan@newpointproperty.co.za

Contact Head Office
010 0354431

Office 40A
Eden Meadows Complex
1 Van Riebeeck Avenue
Greenstone
1609

291m² Warehouse To Let in Factoria



R18,915 pm

Gross Monthly Rental R18,915 Excl. VAT



Neat 291sqm Warehouse TO LET in Factoria

Extremely neat 291sqm warehouse unit is located in a secure industrial park with 24/7 access control, providing excellent security and around-the-clock accessibility. The unit features a roller shutter door for easy goods handling, as well as three-phase power, making it suitable for a variety of light industrial or manufacturing operations.

The internal layout includes a modern two-storey office component and multiple ablution facilities, offering a practical and comfortable working environment for staff. Well-maintained and efficiently designed, this space is ideal for businesses seeking a

Features

Zoning Industrial

Interior

Floor Loading Cap. 1 Tn/m²
Power 3 Phase Yes

Exterior

Security Yes

Sizes

Floor Size 291m²
Land Size 291m²
Building Height 5m

