



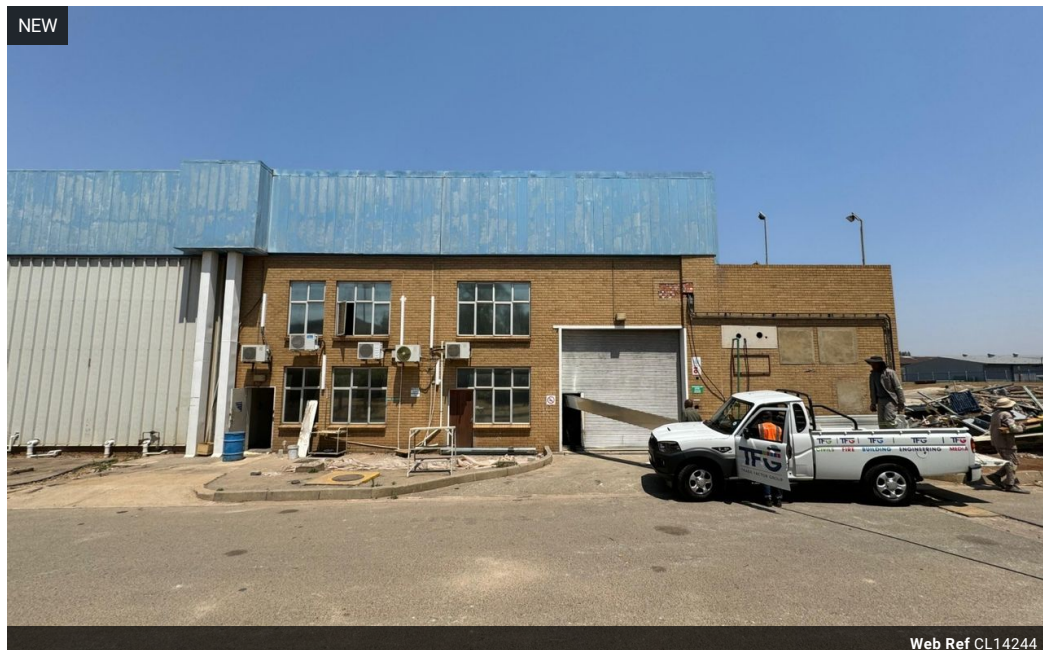
Ryan Van Rensburg
0846482022
ryan@newpointproperty.co.za

Contact Head Office

010 0354431

Office 40A
Eden Meadows Complex
1 Van Riebeeck Avenue
Greenstone
1609

1,822m² Warehouse To Let in Chamdor



Web Ref CL14244



R109,320 pm

Gross Monthly Rental R109,320 Excl. VAT

0 0

1,822m² Warehouse in Secure Chamdor Industrial Park

Position your business for growth with this well-located 1,822m² warehouse in a 24-hour access-controlled industrial park in Chamdor, Krugersdorp. Strategically positioned near major transport routes and surrounded by thriving industrial businesses, the property offers excellent connectivity and operational convenience for logistics, manufacturing, or warehousing operations.

The warehouse is designed for modern industrial needs, featuring a full sprinkler system for safety, three-phase power to support heavy-duty equipment, and a flexible, spacious interior. The secure park ensures uninterrupted operations, making this a prime opportunity for businesses seeking functional, reliable, and strategically positioned industrial space. Contact us today to arrange a

Features

Zoning Industrial

Interior
Power 3 Phase Yes

Exterior
Security Yes

Sizes
Floor Size 1,822m²
Land Size 1,822m²

