



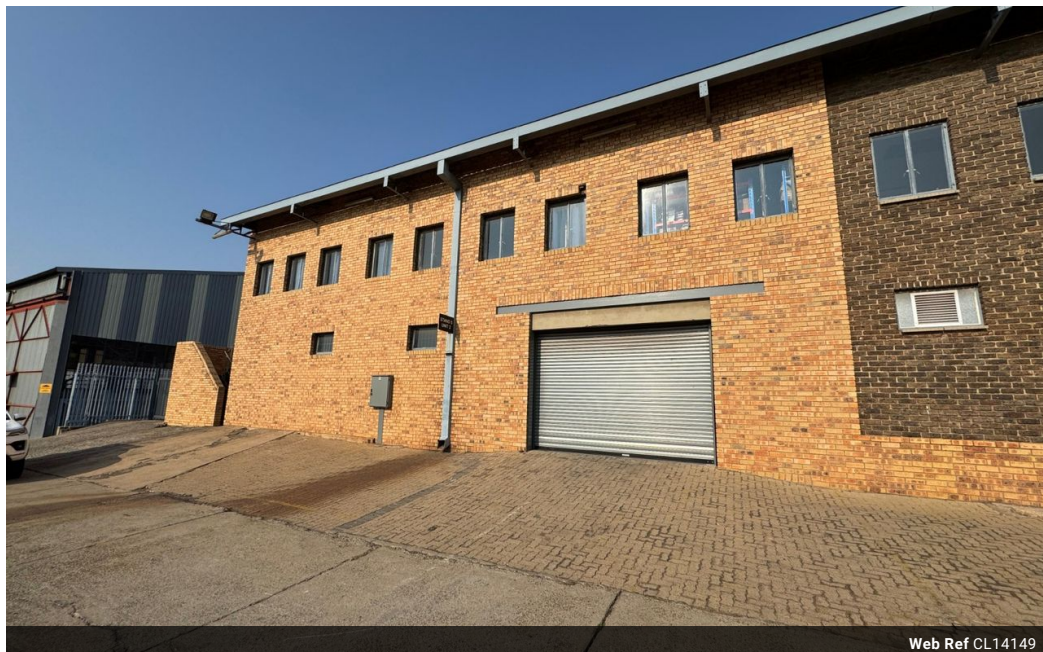
Ryan Van Rensburg
0846482022
ryan@newpointproperty.co.za

Contact Head Office

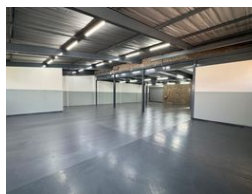
010 0354431

Office 40A
Eden Meadows Complex
1 Van Riebeeck Avenue
Greenstone
1609

550m² Warehouse To Let in Chamdor



Web Ref CL14149



R28,000 pm

Gross Monthly Rental R28,000 Excl. VAT



Neat 550m² Warehouse with Offices in Secure Industrial Park

This 550m² warehouse is situated in a secure industrial park, offering both practicality and peace of mind. Access is made easy through a large roller shutter door, while the open layout, excellent height, and reliable three-phase power make it ideal for light industrial, storage, or manufacturing operations.

The property includes a neat upstairs office component, providing a professional space for administration and management. A private yard and dedicated parking bays further enhance convenience, making this warehouse a well-rounded option for

Features

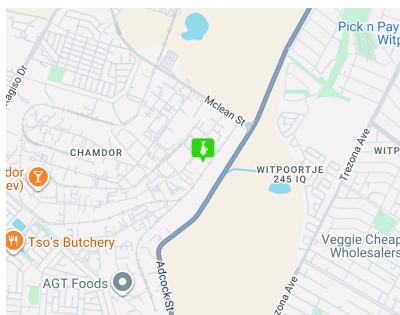
Zoning Industrial

Interior

Floor Loading Cap. 1 Tn/m²
Power 3 Phase Yes

Sizes

Floor Size 550m²
Land Size 550m²
Building Height 4m



<https://www.newpointproperty.co.za>