



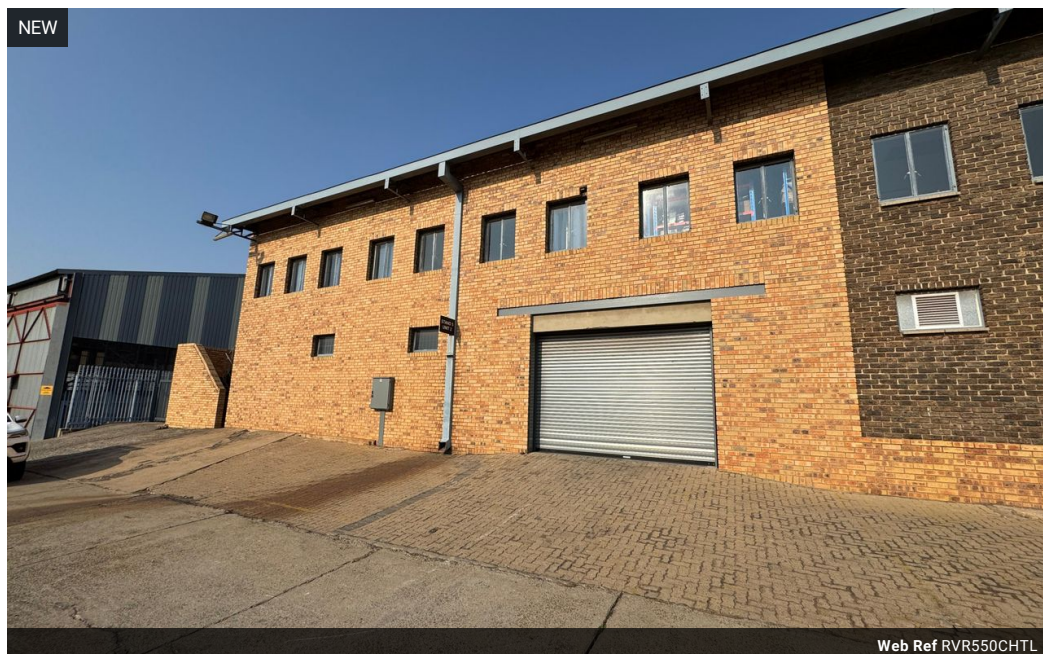
Ryan Van Rensburg
0846482022
ryan@newpointproperty.co.za

Contact Head Office

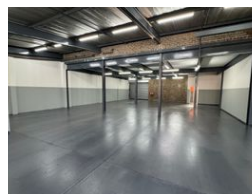
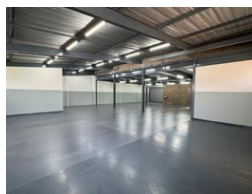
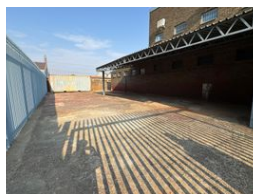
010 0354431

Office 40A
Eden Meadows Complex
1 Van Riebeeck Avenue
Greenstone
1609

550m² Warehouse To Let in Chamdor



Web Ref RVR550CHTL



R28,000 pm

Gross Monthly Rental R28,000 Excl. VAT



550sqm Warehouse TO LET in Chamdor

extremely neat 550sqm warehouse is perfectly positioned within a secure industrial park, offering both functionality and peace of mind. The property features easy access via a large roller shutter door, ideal for deliveries and efficient logistics. Inside, the warehouse boasts excellent height and open space, supported by three-phase power, making it well-suited for a range of light industrial or manufacturing operations.

Upstairs, you'll find a well-maintained office component, offering a professional environment for administration and management tasks. The offices are neatly presented and provide a comfortable workspace. Additional highlights include a private yard and

Features

Zoning Industrial

Interior

Floor Loading Cap. 1 Tn/m²
Power 3 Phase Yes

Sizes

Floor Size 550m²
Land Size 550m²
Building Height 4m

