



**Kobus Louw**  
 0745422026  
 kobus@newpointproperty.co.za

Contact Head Office

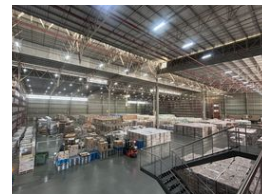
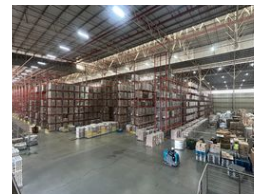
010 0354431

Office 40A  
 Eden Meadows Complex  
 1 Van Riebeeck Avenue  
 Greenstone  
 1609

22,095m<sup>2</sup> Warehouse To Let in Witfontein AH



Web Ref CL14198



R1,900,000 pm

Gross Monthly Rental R1,900,000 Excl. VAT

0 50

## Upcoming 21,000m<sup>2</sup> AAA-Grade Warehouse – Available January 2026

This 21,000m<sup>2</sup> state-of-the-art warehouse, available for occupation in January 2026, is designed to meet the demands of large-scale logistics, distribution, and industrial operations. Built to AAA-grade specifications, it will feature multiple roller shutter doors, dock levelers, and a full sprinkler system, ensuring seamless goods flow, maximum efficiency, and top-tier fire safety for high-volume storage.

The facility also includes generous office accommodation and multiple boardrooms, enabling businesses to manage both strategic and daily operations on-site. Ample parking for staff, visitors, and heavy vehicles further supports its large-scale capacity. With modern infrastructure, superior access, and comprehensive safety systems, this development offers a future-ready industrial

## Features

**Zoning** Industrial

### Interior

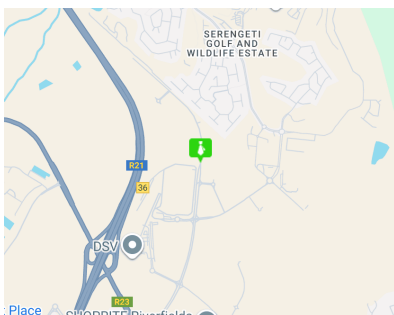
Power 3 Phase Yes  
 Power Amps 400

### Exterior

Security Yes  
 Open Parking Bays 50

### Sizes

Floor Size 22,095m<sup>2</sup>  
 Land Size 100,000m<sup>2</sup>  
 Building Height 10m



<https://www.newpointproperty.co.za>