



Kobus Louw
0745422026
kobus@newpointproperty.co.za

Contact Head Office

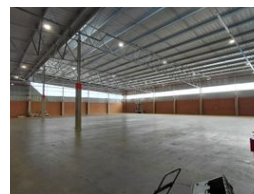
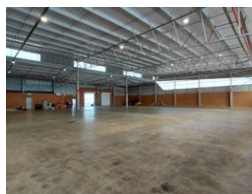
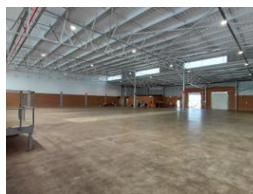
010 0354431

Office 40A
Eden Meadows Complex
1 Van Riebeeck Avenue
Greenstone
1609

1,459m² Warehouse To Let in Witfontein AH



Web Ref TL14590H



R110,884 pm

Gross Monthly Rental R110,884 Excl. VAT
Monthly Rates R19,302 Excl. VAT

Monthly Levy R23,635 Excl. VAT

0 20

Neat, Spacious 1459 sqm Warehouse in Olivewood Hub

This spacious 1,459-square-metre industrial property is immediately available and well-suited for businesses seeking a secure, functional, and professional space. It features a neat reception area that also serves as an open-plan office, complemented by five additional private offices to accommodate various administrative and managerial needs. The property includes a kitchen and four toilets, offering comfort and convenience for staff and visitors throughout the day.

The warehouse is equipped with two large roller shutter doors suitable for super link truck access, supported by a medium-sized yard space that is ideal for loading and offloading operations. A built-in sprinkler system enhances on-site safety and fire

Features

Zoning Industrial

Interior

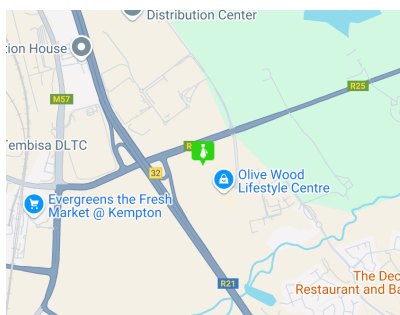
Power 3 Phase	Yes
Power Amps	100

Exterior

Security	Yes
Open Parking Bays	20

Sizes

Floor Size	1,459m ²
Land Size	20,000m ²
Building Height	7m



<https://www.newpointproperty.co.za>